

Datasheet for ABIN528518
anti-POPDC2 antibody (AA 1-364)



[Go to Product page](#)

1 Image

Overview

Quantity:	50 µg
Target:	POPDC2
Binding Specificity:	AA 1-364
Reactivity:	Human
Host:	Mouse
Clonality:	Polyclonal
Conjugate:	This POPDC2 antibody is un-conjugated
Application:	Western Blotting (WB)

Product Details

Purpose:	Mouse polyclonal antibody raised against a full-length human POPDC2 protein.
Immunogen:	POPDC2 (NP_071418.2, 1 a.a. ~ 364 a.a) full-length human protein.
Sequence:	MSANSSRVGQ LLLQGSACIR WKQDVEGAVY HLANCLLLL FMGGSGVYGC FYLFGFLSAG YLCCVLWGWF SACGLDIVLW SFLLAVVCLL QLAHLVYRLR EDTLP EFDL LYKTLCLPLQ VPLQTYKEIV HCCEEQVLT L ATEQTYAVEG ETPINRSL L LSGRVRVSQD GQFLHYIFPY QFMDSPEWES LQPSEEGVFQ VTLTAETSCS YISWPRKSLH LLLTKERYIS CLFSALLGYD ISEKLYTLND KLFAKFLRF DIRLPSLYHV LGPTAADAGP ESEKGDEEVC EPAVSP PQAT PTSLQQT PPC STPPATTNFP APPTRARLSR PDSGILASRI PLQSYSQVIS RGQAPLAPTH TPEL
Cross-Reactivity:	Human
Characteristics:	Antibody reactive against mammalian transfected lysate.

Target Details

Target:	POPDC2
Alternative Name:	POPDC2 (POPDC2 Products)
Background:	Full Gene Name: popeye domain containing 2 Synonyms: POP2
Gene ID:	64091
NCBI Accession:	NM_022135

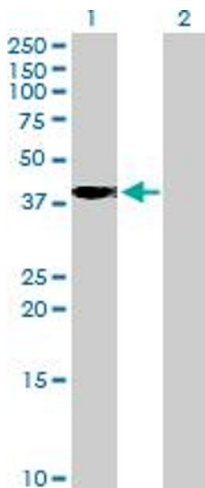
Application Details

Application Notes:	Optimal working dilution should be determined by the investigator.
Restrictions:	For Research Use only

Handling

Buffer:	In 1x PBS, pH 7.4
Handling Advice:	Aliquot to avoid repeated freezing and thawing.
Storage:	-20 °C
Storage Comment:	Store at -20°C or lower. Aliquot to avoid repeated freezing and thawing.

Images



Western Blotting

Image 1. Western Blot analysis of POPDC2 expression in transfected 293T cell line by POPDC2 MaxPab polyclonal antibody.

Lane 1: POPDC2 transfected lysate(40.04 kDa).

Lane 2: Non-transfected lysate.