

Datasheet for ABIN528528
anti-CRLF2 antibody (AA 23-132)

2 Images

[Go to Product page](#)

Overview

Quantity:	100 µg
Target:	CRLF2
Binding Specificity:	AA 23-132
Reactivity:	Human
Host:	Mouse
Clonality:	Monoclonal
Conjugate:	This CRLF2 antibody is un-conjugated
Application:	Western Blotting (WB), ELISA

Product Details

Purpose:	Mouse monoclonal antibody raised against a partial recombinant CRLF2.
Immunogen:	CRLF2 (NP_071431, 23 a.a. ~ 132 a.a) partial recombinant protein with GST tag. MW of the GST tag alone is 26 KDa.
Sequence:	QGGAAGVQI QIYFNLETV QVTWNASKYS RTNLTfHYRF NGDEAYDQCT NYLLQEGHTS GCLLD AEQRD DILYFSIRNG THPVFTASRW MVYYLKPSSP KHVRF SWHQD
Clone:	4A11
Isotype:	IgG2a
Cross-Reactivity:	Human
Characteristics:	Antibody Reactive Against Recombinant Protein.

Target Details

Target:	CRLF2
Alternative Name:	CRLF2 (CRLF2 Products)
Background:	Full Gene Name: cytokine receptor-like factor 2 Synonyms: CRL2,CRLF2Y,TSLPR
Gene ID:	64109
NCBI Accession:	NM_022148

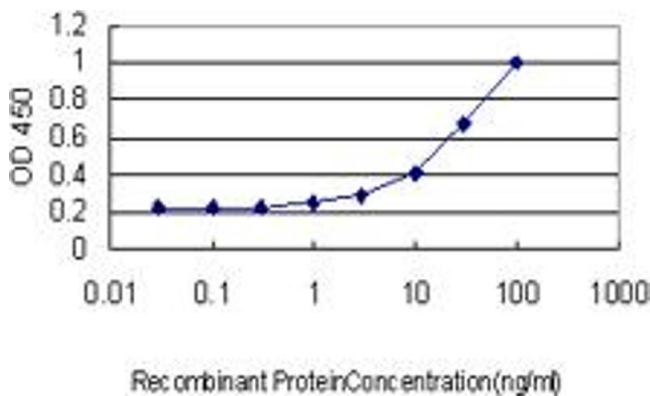
Application Details

Application Notes:	Optimal working dilution should be determined by the investigator.
Restrictions:	For Research Use only

Handling

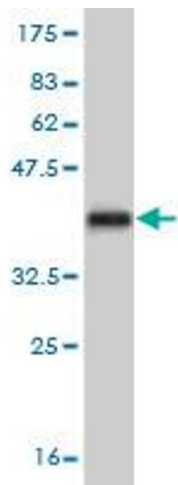
Buffer:	In 1x PBS, pH 7.4
Handling Advice:	Aliquot to avoid repeated freezing and thawing.
Storage:	-20 °C
Storage Comment:	Store at -20°C or lower. Aliquot to avoid repeated freezing and thawing.

Images



ELISA

Image 1. Detection limit for recombinant GST tagged CRLF2 is approximately 3ng/ml as a capture antibody.



Western Blotting

Image 2. Western Blot detection against Immunogen (37.84 kDa) .