



[Go to Product page](#)

Datasheet for ABIN528572

## anti-Sema4a antibody (AA 1-761)

### 1 Image

#### Overview

Quantity:	50 µg
Target:	Sema4a
Binding Specificity:	AA 1-761
Reactivity:	Human
Host:	Mouse
Clonality:	Polyclonal
Conjugate:	This Sema4a antibody is un-conjugated
Application:	Western Blotting (WB)

#### Product Details

Purpose:	Mouse polyclonal antibody raised against a full-length human SEMA4A protein.
Immunogen:	SEMA4A (NP_071762.2, 1 a.a. ~ 761 a.a) full-length human protein.
Sequence:	MALPALGLDP WLLGLFLFQ LLQLLLPTTT AGGGGQGPMP RVRYYAGDER RALSFFHQKG LQDFDTLLLS GDGNTLYVGA REAILALDIQ DPGVPRLKNM IPWPASDRKK SECAFKKKSN ETQCFNFIRV LVSYNVTHLY TCGTFAFSPA CTFIELQDSY LLPISEDKVM EGKGQSPFDP AHKHTAVLVD GMLYSGTMNN FLGSEPILMR TLGSQPVLKT DNFLRWLHHD ASFVAAIPST QVVYFFFEET ASEFDFFERL HTSRVARVCK NDVGGEKLLQ KKWTTFLKAQ LLCTQPGQLP FNVIRHAVLL PADSPTAPHI YAVFTSQWQV GGTRSSAVCA FSLLDIERVF KGKYKELNKE TSRWTTYRGP ETNPRPGSCS VGPSSDKALT FMKDHFLMDE QVVGTPLLVK SGVEYTRLAV ETAQGLDGHS HLVMYLGTTT GSLHKAVVSG DSSAHLVEEI QLFPDPEPVR NLQLAPTQGA VFGVFSGGVW RVPRANCSVY ESCVDCVLAR DPHCAWDPES RTCCLLSAPN LNSWKQDMER GNPEWACASG PMSRSLRPQS RPQIIKEVLA VPNSILELPC PHLASALASY WSHGPAAVPE

## Product Details

---

ASSTVYNGSL LLIVQDGVGG LYQCWATENG FSYPVISYWV DSQDQTLALD PELAGIPREH  
VKVPLTRVSG GAALAAQSY WPHFVTVTVL FALVLSGALI ILVASPLRAL RARGKVQGCE  
TLRPGEKAPL SREQHLQSPK ECRTSASDVD ADNCLGTEV A

Cross-Reactivity: Human

Characteristics: Antibody reactive against mammalian transfected lysate.

## Target Details

---

Target: Sema4a

Alternative Name: SEMA4A ([Sema4a Products](#))

Background: Full Gene Name: sema domain, immunoglobulin domain (Ig), transmembrane domain (TM) and short cytoplasmic domain, (semaphorin) 4A

Synonyms: CORD10,FLJ12287,RP35,SEMAB,SEMB

Gene ID: 64218

NCBI Accession: [NM\\_022367](#)

## Application Details

---

Application Notes: Optimal working dilution should be determined by the investigator.

Restrictions: For Research Use only

## Handling

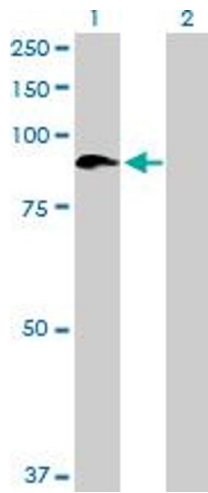
---

Buffer: In 1x PBS, pH 7.4

Handling Advice: Aliquot to avoid repeated freezing and thawing.

Storage: -20 °C

Storage Comment: Store at -20°C or lower. Aliquot to avoid repeated freezing and thawing.



### Western Blotting

**Image 1.** Western Blot analysis of SEMA4A expression in transfected 293T cell line by SEMA4A MaxPab polyclonal antibody.

Lane 1: SEMA4A transfected lysate(83.71 KDa).

Lane 2: Non-transfected lysate.