



[Go to Product page](#)

Datasheet for ABIN528574

anti-Sema4a antibody (AA 33-132)

1 Image

Overview

| | |
|----------------------|---------------------------------------|
| Quantity: | 100 µg |
| Target: | Sema4a |
| Binding Specificity: | AA 33-132 |
| Reactivity: | Human |
| Host: | Mouse |
| Clonality: | Monoclonal |
| Conjugate: | This Sema4a antibody is un-conjugated |
| Application: | ELISA |

Product Details

| | |
|-------------------|--|
| Purpose: | Mouse monoclonal antibody raised against a partial recombinant SEMA4A. |
| Immunogen: | SEMA4A (NP_071762, 33 a.a. ~ 132 a.a) partial recombinant protein with GST tag. MW of the GST tag alone is 26 KDa. |
| Sequence: | GGGQGPMPRV RYYAGDERRA LSFFHQKGLQ DFDTLLLSGD GNTLYVGARE AILALDIQDP GVPRLKNMIP WPASDRKKSE CAFKKKSNET QCFNFIRVLV |
| Clone: | 4E2 |
| Isotype: | IgG2a |
| Cross-Reactivity: | Human |
| Characteristics: | Antibody Reactive Against Recombinant Protein. |

Target Details

| | |
|-------------------|---|
| Target: | Sema4a |
| Alternative Name: | SEMA4A (Sema4a Products) |
| Background: | Full Gene Name: sema domain, immunoglobulin domain (Ig), transmembrane domain (TM) and short cytoplasmic domain, (semaphorin) 4A Synonyms: CORD10,FLJ12287,RP35,SEMAB,SEMB |
| Gene ID: | 64218 |
| NCBI Accession: | NM_022367 |

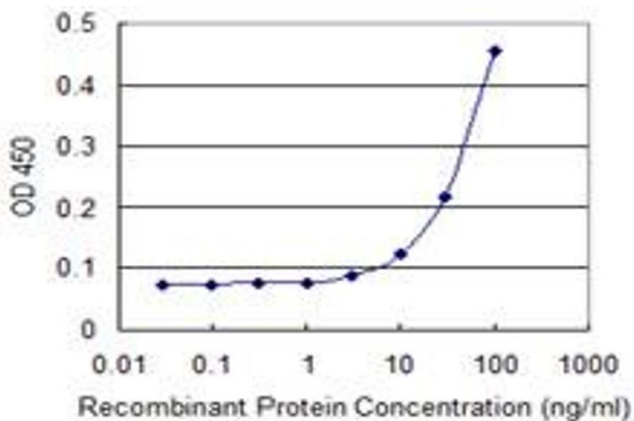
Application Details

| | |
|--------------------|--|
| Application Notes: | Optimal working dilution should be determined by the investigator. |
| Restrictions: | For Research Use only |

Handling

| | |
|------------------|--|
| Buffer: | In 1x PBS, pH 7.4 |
| Handling Advice: | Aliquot to avoid repeated freezing and thawing. |
| Storage: | -20 °C |
| Storage Comment: | Store at -20°C or lower. Aliquot to avoid repeated freezing and thawing. |

Images



ELISA

Image 1. Detection limit for recombinant GST tagged SEMA4A is 3 ng/ml as a capture antibody.