



[Go to Product page](#)

Datasheet for ABIN528622
anti-GREM2 antibody (AA 1-168)

1 Image

Overview

Quantity:	50 µg
Target:	GREM2
Binding Specificity:	AA 1-168
Reactivity:	Human
Host:	Mouse
Clonality:	Polyclonal
Conjugate:	This GREM2 antibody is un-conjugated
Application:	Western Blotting (WB)

Product Details

Purpose:	Mouse polyclonal antibody raised against a full-length human GREM2 protein.
Immunogen:	GREM2 (AAH46632.1, 1 a.a. ~ 168 a.a) full-length human protein.
Sequence:	MFWKLSLSLF MVAVLVKVAE ARKNRPAGAI HSPYKDGSSN NSERWQHGIK EVLASSQEAL VVTERKYLKS DWCKTQPLRQ TVSEEGCRSR TILNRFYCYGQ CNSFYIPRHV KKEEESFQSC AFCKPQRVTS VLVELECPGL DPPFRLKKIQ KVKQCRCMSV NLSDSDKQ
Cross-Reactivity:	Human
Characteristics:	Antibody reactive against mammalian transfected lysate.

Target Details

Target:	GREM2
---------	-------

Target Details

Alternative Name:	GREM2 (GREM2 Products)
Background:	Full Gene Name: gremlin 2, cysteine knot superfamily, homolog (Xenopus laevis) Synonyms: CKTSF1B2,DAND3,PRDC
Gene ID:	64388

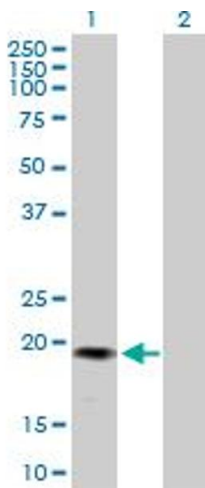
Application Details

Application Notes:	Optimal working dilution should be determined by the investigator.
Restrictions:	For Research Use only

Handling

Buffer:	In 1x PBS, pH 7.4
Handling Advice:	Aliquot to avoid repeated freezing and thawing.
Storage:	-20 °C
Storage Comment:	Store at -20°C or lower. Aliquot to avoid repeated freezing and thawing.

Images



Western Blotting

Image 1. Western Blot analysis of GREM2 expression in transfected 293T cell line by GREM2 MaxPab polyclonal antibody.

Lane 1: GREM2 transfected lysate(18.48 KDa).

Lane 2: Non-transfected lysate.