



[Go to Product page](#)

Datasheet for ABIN528623
anti-GREM2 antibody (AA 1-168)

1 Image

Overview

Quantity:	100 µg
Target:	GREM2
Binding Specificity:	AA 1-168
Reactivity:	Human
Host:	Mouse
Clonality:	Monoclonal
Conjugate:	This GREM2 antibody is un-conjugated
Application:	ELISA

Product Details

Purpose:	Mouse monoclonal antibody raised against a full-length recombinant GREM2.
Immunogen:	GREM2 (AAH46632.1, 1 a.a. ~ 168 a.a) full-length recombinant protein with GST tag. MW of the GST tag alone is 26 KDa.
Sequence:	MFWKLSLSLF MVAVLVKVAE ARKNRPAGAI HSPYKDGSSN NSERWQHGIK EVLASSQEAL VVTERKYLKS DWCKTQPLRQ TVSEEGCRSR TILNRFCCGQ CNSFYIPRHV KKEEESFQSC AFCKPQRVTS VLVELECPGL DPPFRLKKIQ KVKQCRCMSV NLSDSDKQ
Clone:	4D9
Isotype:	IgG2a
Cross-Reactivity:	Human
Characteristics:	Antibody Reactive Against Recombinant Protein.

Target Details

Target:	GREM2
Alternative Name:	GREM2 (GREM2 Products)
Background:	Full Gene Name: gremlin 2, cysteine knot superfamily, homolog (Xenopus laevis) Synonyms: CKTSF1B2,DAND3,PRDC
Gene ID:	64388

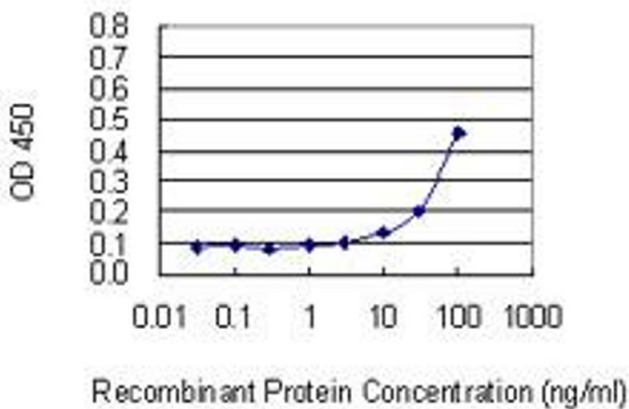
Application Details

Application Notes:	Optimal working dilution should be determined by the investigator.
Restrictions:	For Research Use only

Handling

Buffer:	In 1x PBS, pH 7.4
Handling Advice:	Aliquot to avoid repeated freezing and thawing.
Storage:	-20 °C
Storage Comment:	Store at -20°C or lower. Aliquot to avoid repeated freezing and thawing.

Images



ELISA

Image 1. Detection limit for recombinant GST tagged GREM2 is 3 ng/ml as a capture antibody.