



[Go to Product page](#)

Datasheet for ABIN528646  
**anti-DCLRE1C antibody (AA 1-434)**

1 Image

Overview

Quantity:	100 µg
Target:	DCLRE1C
Binding Specificity:	AA 1-434
Reactivity:	Human
Host:	Rabbit
Clonality:	Polyclonal
Conjugate:	This DCLRE1C antibody is un-conjugated
Application:	Western Blotting (WB)

Product Details

Purpose:	Rabbit polyclonal antibody raised against a full-length human DCLRE1C protein.
Immunogen:	DCLRE1C (AAH22254.1, 1 a.a. ~ 434 a.a) full-length human protein.
Sequence:	MSSFEGQMAE YPTISIDRFD RENLRARAYF LSHCHKDHMK GLRAPTLKRR LECSLKVYLY CSPVTKELLL TSPKYRFWKK RIISIEIETP TQISLVDEAS GEKEEIVVTL LPAGHCPSGV MFLFQGNGT VLYTGDFRLA QGEAARMELL HSGGRVKDIQ SVYLDTTFCF PRFYQIPSRE ECLSGVLELV RSWITRSPYH VVWLNCKAAY GYEYLFNTLS EELGVQVHVN KLDMFRNMPE ILRHLLTDRN TQIHACRHPK AEEYFQWSKL PCGITSRNRI PLHIISIKPS TMWFGERSRK TNVIVRTGES SYRACFSFHS SYSEIKDFLS YLCPVNAYPN VIPVGTMDK VVEILKPLCR SSQSTEPKYK PLGKLRART VHRDSGSHSV TQARMRWCHH DSLYPLTPGI KRSSCLSLLT SWITGAYRHA QLMI
Cross-Reactivity:	Human

## Product Details

Characteristics: Antibody reactive against mammalian transfected lysate.

## Target Details

Target: DCLRE1C

Alternative Name: DCLRE1C ([DCLRE1C Products](#))

Background: Full Gene Name: DNA cross-link repair 1C (PSO2 homolog, *S. cerevisiae*)  
Synonyms: A-SCID,DCLREC1C,FLJ11360,FLJ36438,RS-SCID,SCIDA,SNM1C

Gene ID: 64421

Pathways: [DNA Damage Repair](#)

## Application Details

Application Notes: Optimal working dilution should be determined by the investigator.

Restrictions: For Research Use only

## Handling

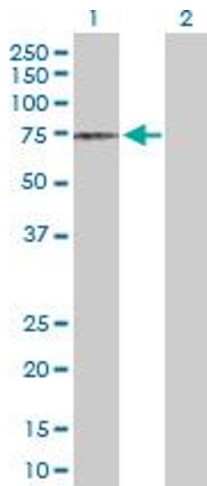
Buffer: In 1x PBS, pH 7.4

Handling Advice: Aliquot to avoid repeated freezing and thawing.

Storage: -20 °C

Storage Comment: Store at -20°C or lower. Aliquot to avoid repeated freezing and thawing.

## Images



### Western Blotting

**Image 1.** Western Blot analysis of DCLRE1C expression in transfected 293T cell line by DCLRE1C MaxPab polyclonal antibody.

Lane 1: DCLRE1C transfected lysate(50.00 KDa).

Lane 2: Non-transfected lysate.