



[Go to Product page](#)

Datasheet for ABIN528649
anti-INF2 antibody (AA 1-234)

1 Image

Overview

Quantity:	50 µg
Target:	INF2
Binding Specificity:	AA 1-234
Reactivity:	Human
Host:	Mouse
Clonality:	Polyclonal
Conjugate:	This INF2 antibody is un-conjugated
Application:	Western Blotting (WB)

Product Details

Purpose:	Mouse polyclonal antibody raised against a full-length human INF2 protein.
Immunogen:	INF2 (NP_116103, 1 a.a. ~ 234 a.a) full-length human protein.
Sequence:	MSVKEGAQRK WAALKEKLG P QDSDPTEANL ESADPELCIR LLQMPSVVNY SGLRKRLEGS DGGWMVQFLE QSGDLLLEA LARLSGRGVA RISDALLQLT CVSCVRAVMN SRQGIEYILS NQGYYRQLSQ ALDTSNVMVK KQVFELLAAL CIYSPEGHVL TLDALDHYKT VCSQQYRFSI VMNELSGSDN VPYVVTLLSV INAVILGPED LRARTQLRNE FIGLQLLDVL ARLR
Cross-Reactivity:	Human
Characteristics:	Antibody reactive against mammalian transfected lysate.

Target Details

Target:	INF2
---------	------

Target Details

Alternative Name:	INF2 (INF2 Products)
Background:	Full Gene Name: inverted formin, FH2 and WH2 domain containing Synonyms: C14orf151,C14orf173,DKFZp762A0214,FLJ22056,MGC13251,pp9484
Gene ID:	64423
NCBI Accession:	NM_032714

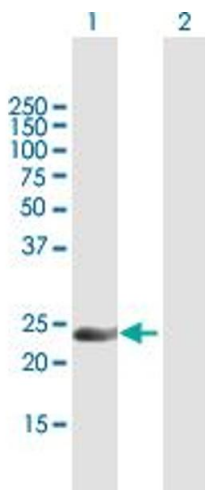
Application Details

Application Notes:	Optimal working dilution should be determined by the investigator.
Restrictions:	For Research Use only

Handling

Buffer:	In 1x PBS, pH 7.4
Handling Advice:	Aliquot to avoid repeated freezing and thawing.
Storage:	-20 °C
Storage Comment:	Store at -20°C or lower. Aliquot to avoid repeated freezing and thawing.

Images



Western Blotting

Image 1. Western Blot analysis of INF2 expression in transfected 293T cell line by INF2 MaxPab polyclonal antibody.

Lane 1: INF2 transfected lysate(25.74 KDa).

Lane 2: Non-transfected lysate.