



Datasheet for ABIN528671
anti-MOSPD3 antibody (AA 43-141)



[Go to Product page](#)

1 Image

1 Publication

Overview

Quantity:	100 µg
Target:	MOSPD3
Binding Specificity:	AA 43-141
Reactivity:	Human
Host:	Mouse
Clonality:	Monoclonal
Conjugate:	This MOSPD3 antibody is un-conjugated
Application:	ELISA

Product Details

Purpose:	Mouse monoclonal antibody raised against a partial recombinant MOSPD3.
Immunogen:	MOSPD3 (NP_076438, 43 a.a. ~ 141 a.a) partial recombinant protein with GST tag. MW of the GST tag alone is 26 KDa.
Sequence:	FRADQRSGPR QLLTLYNPTG TALRFRVLCT APAKYTVFDA EGYVKPQSCI DIVIRHVAPI PSHYDVQDRF RIELSEEGAE GRVVGRKDIT SILRAPAYP
Clone:	1H6
Isotype:	IgG2a
Cross-Reactivity:	Human
Characteristics:	Antibody Reactive Against Recombinant Protein.

Target Details

Target:	MOSPD3
Alternative Name:	MOSPD3 (MOSPD3 Products)
Background:	Full Gene Name: motile sperm domain containing 3 Synonyms: CDS3
Gene ID:	64598
NCBI Accession:	NM_023948

Application Details

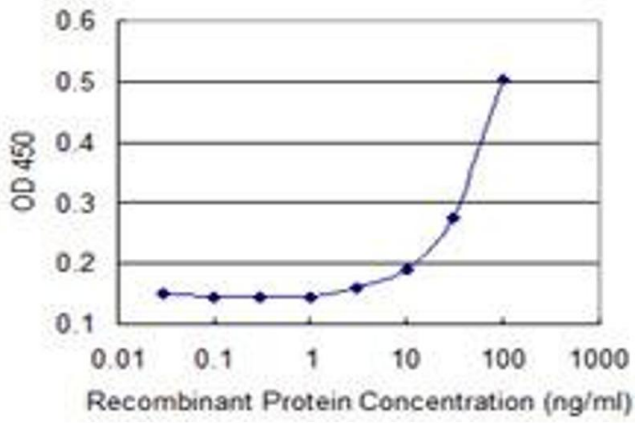
Application Notes:	Optimal working dilution should be determined by the investigator.
Restrictions:	For Research Use only

Handling

Buffer:	In 1x PBS, pH 7.4
Handling Advice:	Aliquot to avoid repeated freezing and thawing.
Storage:	-20 °C
Storage Comment:	Store at -20°C or lower. Aliquot to avoid repeated freezing and thawing.

Publications

Product cited in:	Li, Wang, Feng, Ning, Miao, Wang, Li: "Magnetic bead-based separation of sperm from buccal epithelial cells using a monoclonal antibody against MOSPD3." in: International journal of legal medicine , Vol. 128, Issue 6, pp. 905-11, (2014) (PubMed).
-------------------	---



ELISA

Image 1. Detection limit for recombinant GST tagged MOSPD3 is 3 ng/ml as a capture antibody.