



Datasheet for ABIN528683  
**anti-WDR13 antibody (AA 391-484)**



[Go to Product page](#)

2 Images

Overview

Quantity:	100 µg
Target:	WDR13
Binding Specificity:	AA 391-484
Reactivity:	Human
Host:	Mouse
Clonality:	Monoclonal
Conjugate:	This WDR13 antibody is un-conjugated
Application:	ELISA, Western Blotting (WB)

Product Details

Purpose:	Mouse monoclonal antibody raised against a partial recombinant WDR13.
Immunogen:	WDR13 (NP_060353.2, 391 a.a. ~ 484 a.a) partial recombinant protein with GST tag. MW of the GST tag alone is 26 KDa.
Sequence:	GTLQLKRSFP IEQSSHPVRS IFCPLMSFRQ GACVVTGSED MCVHFFDVER AAKAAVNKLQ GHSAPVLDVS FNCDESLAS SDASGMVIVW RREQ
Clone:	1G9
Isotype:	IgG2a
Cross-Reactivity:	Human
Characteristics:	Antibody Reactive Against Recombinant Protein.

## Target Details

Target:	WDR13
Alternative Name:	WDR13 ( <a href="#">WDR13 Products</a> )
Background:	Full Gene Name: WD repeat domain 13 Synonyms: DKFZp779C2057,FLJ20563,MG21
Gene ID:	64743
NCBI Accession:	<a href="#">NM_017883</a>

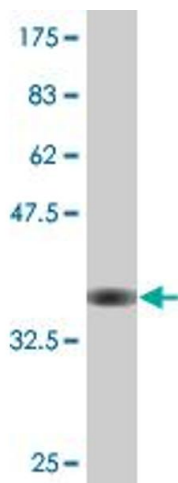
## Application Details

Application Notes:	Optimal working dilution should be determined by the investigator.
Restrictions:	For Research Use only

## Handling

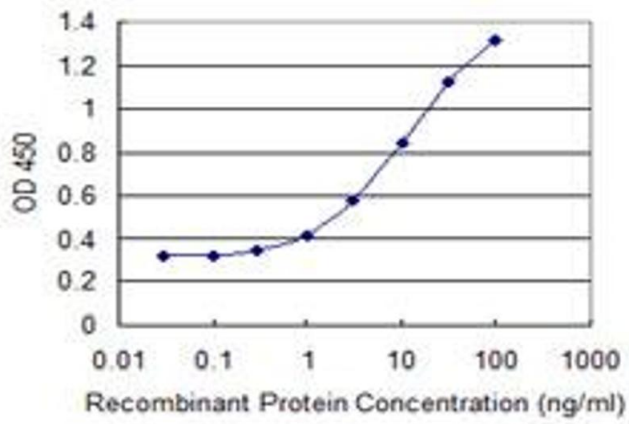
Buffer:	In 1x PBS, pH 7.4
Handling Advice:	Aliquot to avoid repeated freezing and thawing.
Storage:	-20 °C
Storage Comment:	Store at -20°C or lower. Aliquot to avoid repeated freezing and thawing.

## Images



### Western Blotting

**Image 1.** Western Blot detection against Immunogen (36.08 KDa) .



## ELISA

**Image 2.** Detection limit for recombinant GST tagged WDR13 is 0.1 ng/ml as a capture antibody.