

Datasheet for ABIN528698  
**anti-RBM15 antibody (AA 1-544)**



[Go to Product page](#)

4 Images

Overview

|                      |  |
|----------------------|--|
| Quantity:            | 50 µg  |
| Target:              | RBM15  |
| Binding Specificity: | AA 1-544                                       |
| Reactivity:          | Human  |
| Host:                | Mouse  |
| Clonality:           | Polyclonal                                     |
| Conjugate:           | This RBM15 antibody is un-conjugated           |
| Application:         | Western Blotting (WB), Immunofluorescence (IF) |

Product Details

|            |  |
|------------|--|
| Purpose:   | Mouse polyclonal antibody raised against a full-length human RBM15 protein.  |
| Immunogen: | RBM15 (AAI03661.1, 1 a.a. ~ 544 a.a) full-length human protein.  |
| Sequence:  | MSHRAKLAMS GKIIIRNPIK IGYGKATPTT RLWVGGLGPW VPLAALAREF DRFGTIRTID<br>YRKGDSWAYI QYESLDAAHA AWTHMRGFPL GGPDRRLRVD FADTEHRYQQ QYLQPLPLTH<br>YELVTDAFGH RAPDPLRGAR DRTPPLLYRD RDRDLYPDS WVPVVPPVRE RSTRTAATSV<br>PAYEPLDSLDR RRRDGSWLDLDR DRGDRDLPS RDQPRKRRLP EESGGRHLDR SPESDRPRKR<br>HCAPSPDRSP ELSSSRDRYN SDNDRSSRLL LERPSPDRDR RGSLEKSQGD KRDRKNSASA<br>ERDRKHRTTA PTEGKSPLKK EDRSDGSAPS TSTASSKLKS PSQKQDGGTA PVASAPKLC<br>LAWQGMLLLK NSNFPSNMHL LQGDLQVASS LLVEGSTGGK VAQLKITQRL RLDQPKLDEV<br>TRRIKVAGPN GYAILLAVPG SSSDRSSSSS AASDTATSTQ RPLRNLVSYL KQKQAAGVIS<br>LPVGGNKDKE NTGVLHAFPP CEFSQQFLDS PAKALAKSEE DYLVMIIVRA KLVEQRMKIW NSKL |

## Product Details

|                   |   |
|-------------------|---|
| Cross-Reactivity: | Human, Rat  |
| Characteristics:  | Antibody reactive against mammalian transfected lysate. |

## Target Details

|                   |   |
|-------------------|---|
| Target:           | RBM15   |
| Alternative Name: | RBM15 ( <a href="#">RBM15 Products</a> )  |
| Background:       | Full Gene Name: RNA binding motif protein 15<br>Synonyms: FLJ12479,FLJ21943,MGC119584,OTT,OTT1,SPEN |
| Gene ID:          | 64783   |

## Application Details

|                    |  |
|--------------------|--|
| Application Notes: | Optimal working dilution should be determined by the investigator. |
| Restrictions:      | For Research Use only  |

## Handling

|                  |  |
|------------------|--|
| Buffer:          | In 1x PBS, pH 7.4  |
| Handling Advice: | Aliquot to avoid repeated freezing and thawing.                          |
| Storage:         | -20 °C   |
| Storage Comment: | Store at -20°C or lower. Aliquot to avoid repeated freezing and thawing. |

## Images

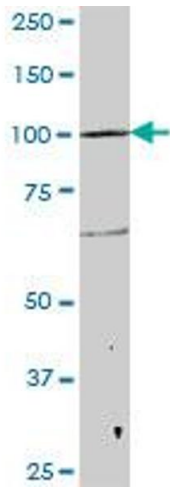


### Western Blotting

**Image 1.** Western Blot analysis of RBM15 expression in transfected 293T cell line by RBM15 MaxPab polyclonal antibody.

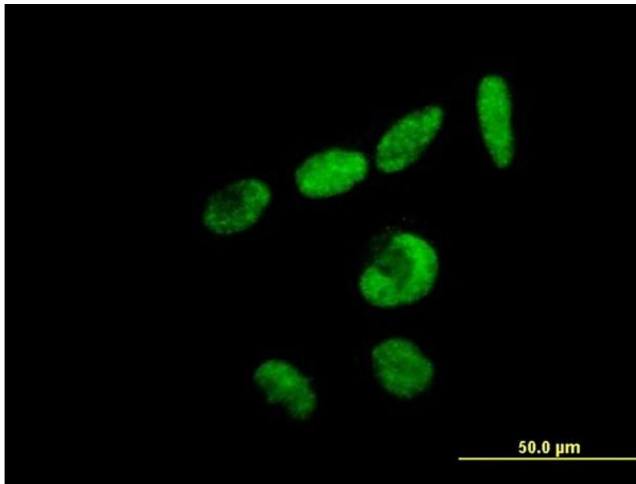
Lane 1: RBM15 transfected lysate(59.84 KDa).

Lane 2: Non-transfected lysate.



### Western Blotting

**Image 2.** RBM15 MaxPab polyclonal antibody. Western Blot analysis of RBM15 expression in rat brain.



### Immunofluorescence

**Image 3.** Immunofluorescence of purified MaxPab antibody to RBM15 on HeLa cell. [antibody concentration 10 ug/ml]

Please check the [product details page](#) for more images. Overall 4 images are available for ABIN528698.