



[Go to Product page](#)

Datasheet for ABIN528699

## anti-RBM15 antibody (AA 701-810)

### 3 Images

#### Overview

Quantity:	100 µg
Target:	RBM15
Binding Specificity:	AA 701-810
Reactivity:	Human
Host:	Mouse
Clonality:	Monoclonal
Conjugate:	This RBM15 antibody is un-conjugated
Application:	Western Blotting (WB), ELISA, Immunofluorescence (IF)

#### Product Details

Purpose:	Mouse monoclonal antibody raised against a partial recombinant RBM15.
Immunogen:	RBM15 (NP_073605.4, 701 a.a. ~ 810 a.a) partial recombinant protein with GST tag. MW of the GST tag alone is 26 KDa.
Sequence:	PIRRRRGSLE KSQGDKRDRK NSASAERDRK HRTTAPTEGK SPLKKEDRSD GSAPSTSTAS SKLKSPSQKQ DGGTAPVASA SPKLCLAWQG MLLKNSNFP SNMHLLQGDL
Clone:	3E2
Isotype:	IgG2a
Cross-Reactivity:	Human
Characteristics:	Antibody Reactive Against Recombinant Protein.

## Target Details

Target:	RBM15
Alternative Name:	RBM15 ( <a href="#">RBM15 Products</a> )
Background:	Full Gene Name: RNA binding motif protein 15 Synonyms: FLJ12479,FLJ21943,MGC119584,OTT,OTT1,SPEN
Gene ID:	64783
NCBI Accession:	<a href="#">NM_022768</a>

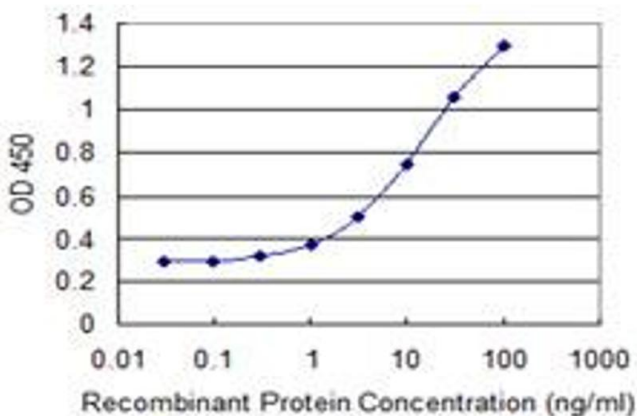
## Application Details

Application Notes:	Optimal working dilution should be determined by the investigator.
Restrictions:	For Research Use only

## Handling

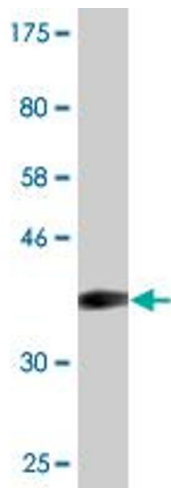
Buffer:	In 1x PBS, pH 7.4
Handling Advice:	Aliquot to avoid repeated freezing and thawing.
Storage:	-20 °C
Storage Comment:	Store at -20°C or lower. Aliquot to avoid repeated freezing and thawing.

## Images



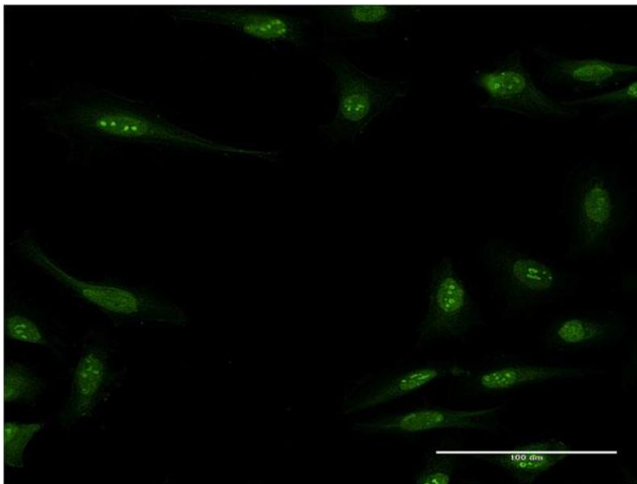
### ELISA

**Image 1.** Detection limit for recombinant GST tagged RBM15 is 0.1 ng/ml as a capture antibody.



### Western Blotting

**Image 2.** Western Blot detection against Immunogen (37.84 kDa).



### Immunofluorescence

**Image 3.** Immunofluorescence of monoclonal antibody to RBM15 on HeLa cell. [antibody concentration 10 ug/ml]