



[Go to Product page](#)

Datasheet for ABIN528705
anti-CEP85 antibody (AA 1-762)

2 Images

Overview

Quantity:	50 µg
Target:	CEP85
Binding Specificity:	AA 1-762
Reactivity:	Human
Host:	Mouse
Clonality:	Polyclonal
Conjugate:	This CEP85 antibody is un-conjugated
Application:	Western Blotting (WB)

Product Details

Purpose:	Mouse polyclonal antibody raised against a full-length human CCDC21 protein.
Immunogen:	CCDC21 (NP_073615.2, 1 a.a. ~ 762 a.a) full-length human protein.
Sequence:	MAMQEKYPT E GISHVTSPSS DVIQKGSSLG TEWQTPVISE PFRSRFSRCS SVADSGDTAI GTSCSDIAED FCSSSGSPPF QPIKSHVTIP TAHVMPSTLG TSPAKPNSTP VGPSSSKLPL SGLAESVGMT RNGDLGAMKH SPGLSRDLMY FSGATGENGI EQSWFPAVGH ERQEEARKFD IPSMESTLNQ SAMMETLYSD PHHRVRFHNP RTSTSKELYS VLPEAKKAPG SGAVFERNGP HSNSSGVLPL GLQPAPGLSK PLPSQVWQPS PDTWHPREQS CELSTCRQQL ELIRLQMEQM QLQNGAICHH PAAFGPSLPI LEPAQWISIL NSNEHLLKEK ELLIDKQRKH ISQLEQKVRE SELQVHSALL GRPAPFGDVC LLRLQELQRE NTFLRAQFAQ KTEALSREKI DLEKKLSASE VEVQLIRESL KVALQKHSEE VKKQEERVKG RDKHINNLLK KCQKESEQNR EKQQRITLE RYLADLPTLE DHQKQSQQLK DSELKSTELQ EKVTELESLL EETQAICREK EIQLES LRQR EAEFSSAGHS LQDKQSVEET SGEGPEVEME SWQKRYDSLQ KIVEKQQQKM DQLRSQVQSL

Product Details

EQEVAQEEGT SQALREEAQR RDSALQQLRT AVKELSVQVQNL DLIKNTLQ EHLRQAQPGS
PPSPDTAQLA LELHQELASC LQDLQAVCSI VTQRAQGHDP NLSLLGIHS AQHPETQLDL
QKPDVIKRLK EEVQQLRRDI EDLRTTMSDR YAQDMGENCV TQ

Cross-Reactivity: Human

Characteristics: Antibody reactive against mammalian transfected lysate.

Target Details

Target: CEP85

Alternative Name: CCDC21 ([CEP85 Products](#))

Background: Full Gene Name: coiled-coil domain containing 21
Synonyms: DKFZp434L0117,DKFZp434P232,FLJ13976,FLJ22000

Gene ID: 64793

NCBI Accession: [NM_022778](#)

Application Details

Application Notes: Optimal working dilution should be determined by the investigator.

Restrictions: For Research Use only

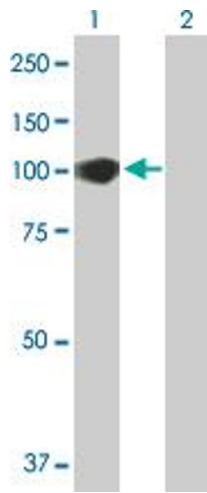
Handling

Buffer: In 1x PBS, pH 7.4

Handling Advice: Aliquot to avoid repeated freezing and thawing.

Storage: -20 °C

Storage Comment: Store at -20°C or lower. Aliquot to avoid repeated freezing and thawing.

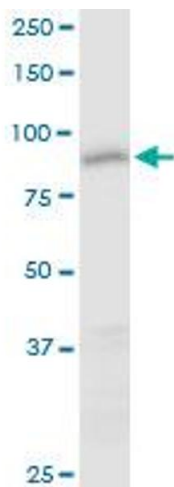


Western Blotting

Image 1. Western Blot analysis of CCDC21 expression in transfected 293T cell line by CCDC21 MaxPab polyclonal antibody.

Lane 1: CCDC21 transfected lysate(83.82 KDa).

Lane 2: Non-transfected lysate.



Western Blotting

Image 2. CCDC21 MaxPab polyclonal antibody. Western Blot analysis of CCDC21 expression in HeLa.