

Datasheet for ABIN528709
anti-DEPTOR antibody (AA 1-409)



[Go to Product page](#)

3 Images

Overview

Quantity:	100 µg
Target:	DEPTOR
Binding Specificity:	AA 1-409
Reactivity:	Human
Host:	Rabbit
Clonality:	Polyclonal
Application:	Western Blotting (WB)

Product Details

Purpose:	Rabbit polyclonal antibody raised against a full-length human DEPDC6 protein.
Immunogen:	DEPDC6 (AAH12040.1, 1 a.a. ~ 409 a.a) full-length human protein.
Sequence:	MEEGGSTGSA GSDSSTSGSG GAQQRELERM AEVLVTGEQL RLRLHEEKVI KDRRHHLKTY PNCFVAKELI DWLIEHKEAS DRETAIKLMQ KLADRGIIHH VCDEHKEFKD VKLFYRFRKD DGTFFPLDNEV KAFMRGQRLY EKLMSPENTL LQPREEEGVK YERTFMASEF LDWLVQEGEA TTRKEAEQLC HRLMEHGIIQ HVSSKHPFVD SNLLYQFRMN FRRRRRLMEL LNEKSPSSQE THDSPFCLRK QSHDNRKSTS FMSVSPSKEI KIVSAVRRSS MSSCGSSGYF SSSPTLSSSP PVLCNPKSVL KRPVTSEELL TPGAPYARKT FTIVGDAVGW GFVVRGSKPC HIQAVDPSPG AAAAGMKVCQ FVSVNGLNV LHVDYRTVNN LILTPRTIV MEVMEELEC
Cross-Reactivity:	Human, Mouse
Characteristics:	Antibody reactive against mammalian transfected lysate.

Target Details

Target: DEPTOR

Alternative Name: DEPDC6 ([DEPTOR Products](#))

Background: Full Gene Name: DEP domain containing 6
Synonyms: DEP.6, DKFZp564B1778, FLJ12341, FLJ12428, FLJ13854

Gene ID: 64798

Pathways: [PI3K-Akt Signaling](#), [RTK Signaling](#), [Regulation of Cell Size](#), [BCR Signaling](#), [Warburg Effect](#)

Application Details

Application Notes: Optimal working dilution should be determined by the investigator.

Restrictions: For Research Use only

Handling

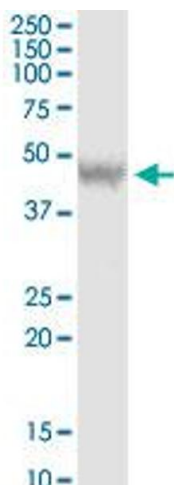
Buffer: In 1x PBS, pH 7.4

Handling Advice: Aliquot to avoid repeated freezing and thawing.

Storage: -20 °C

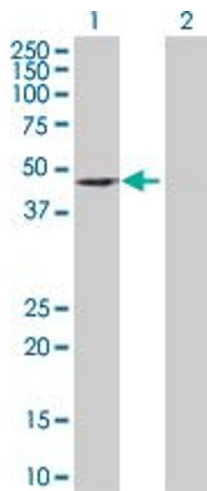
Storage Comment: Store at -20°C or lower. Aliquot to avoid repeated freezing and thawing.

Images



Western Blotting

Image 1. DEPDC6 MaxPab rabbit polyclonal antibody. Western Blot analysis of DEPDC6 expression in human colon.

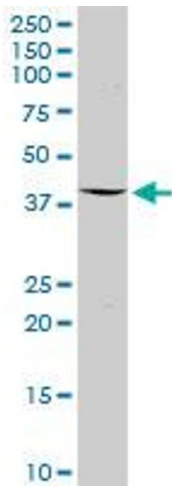


Western Blotting

Image 2. Western Blot analysis of DEPDC6 expression in transfected 293T cell line by DEPDC6 MaxPab polyclonal antibody.

Lane 1: DEPDC6 transfected lysate(46.30 kDa).

Lane 2: Non-transfected lysate.



Western Blotting

Image 3. DEPDC6 MaxPab rabbit polyclonal antibody. Western Blot analysis of DEPDC6 expression in mouse liver.