



[Go to Product page](#)

Datasheet for ABIN528795

anti-PYCRL antibody (AA 1-274)

1 Image

Overview

Quantity:	100 µL
Target:	PYCRL
Binding Specificity:	AA 1-274
Reactivity:	Human
Host:	Rabbit
Clonality:	Polyclonal
Conjugate:	This PYCRL antibody is un-conjugated
Application:	Immunoprecipitation (IP)

Product Details

Purpose:	Rabbit polyclonal antibody raised against a full-length human PYCRL protein.
Immunogen:	PYCRL (AAH07993.1, 1 a.a. ~ 274 a.a) full-length human protein.
Sequence:	MAAAEPSRR VGFVGGRMA GAIAQLIRA GKVEAQHILA SAPDRNLCH FQALGCRTH SNQEVLSCL LVIFATKPHV LPAVLAEVAP VVTEHILVS VAAGVSLSTL EELLPPNTRV LRVLPNLPCV VQEGAIVMAR GRHVGSSSETN LLQHLLLEACG RCEEVPEAYV DIHTGLSGSG VAFVCAFSEA LAEGAVKMG M PSSLAHRIAA QTLLGTAKML LHEGQHPAQL RSDVCTPGGT TIYGLHALEQ GGLRAATMSA VEAATCRAKE LSRK
Cross-Reactivity:	Human
Characteristics:	Antibody reactive against mammalian transfected lysate.

Target Details

Target:	PYCRL
Alternative Name:	PYCRL (PYCRL Products)
Background:	Full Gene Name: pyrroline-5-carboxylate reductase-like Synonyms: FLJ13852
Gene ID:	65263

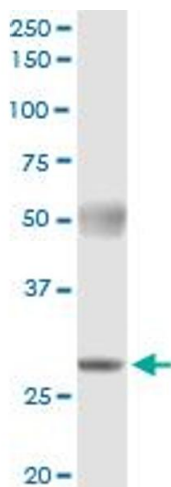
Application Details

Application Notes:	Optimal working dilution should be determined by the investigator.
Restrictions:	For Research Use only

Handling

Format:	Liquid
Buffer:	No additive
Preservative:	Without preservative
Handling Advice:	Aliquot to avoid repeated freezing and thawing.
Storage:	-20 °C
Storage Comment:	Store at -20°C or lower. Aliquot to avoid repeated freezing and thawing.

Images



Immunoprecipitation

Image 1. Immunoprecipitation of PYCRL transfected lysate using anti-PYCRL MaxPab rabbit polyclonal antibody and Protein A Magnetic Bead , and immunoblotted with PYCRL purified MaxPab mouse polyclonal antibody (B01P) .