



[Go to Product page](#)

Datasheet for ABIN528799

anti-C8orf33 antibody (AA 1-229)

2 Images

Overview

| | |
|----------------------|--|
| Quantity: | 50 µg |
| Target: | C8orf33 |
| Binding Specificity: | AA 1-229 |
| Reactivity: | Human |
| Host: | Mouse |
| Clonality: | Polyclonal |
| Conjugate: | This C8orf33 antibody is un-conjugated |
| Application: | Western Blotting (WB), Immunofluorescence (IF) |

Product Details

| | |
|-------------------|---|
| Purpose: | Mouse polyclonal antibody raised against a full-length human C8orf33 protein. |
| Immunogen: | C8orf33 (AAH10001, 1 a.a. ~ 229 a.a) full-length human protein. |
| Sequence: | MAALGHLAGE AAAAPGPGTP CASRGARLPG PVSSARNPST VCLCPEQPTC SNADSRHPL GDEGGTASKK QKNKKKTRNR ASVANGGEKA SEKLAPEEVP LSAEAQAQQL AQELAWCVEQ LELGLKRQKP TPKQKEQAIG AIRTLRSKRT PLPRKRQLMH SLFGDYRAQM EAEWREALRA LRAAAYSAQV QPVDGATRKK SQRVCRPSI WRAKATLDMP DEEFRNFF |
| Cross-Reactivity: | Human |
| Characteristics: | Antibody reactive against mammalian transfected lysate. |

Target Details

| | |
|---------|---------|
| Target: | C8orf33 |
|---------|---------|

Target Details

| | |
|-------------------|--|
| Alternative Name: | C8orf33 (C8orf33 Products) |
| Background: | Full Gene Name: chromosome 8 open reading frame 33 Synonyms: FLJ20989 |
| Gene ID: | 65265 |

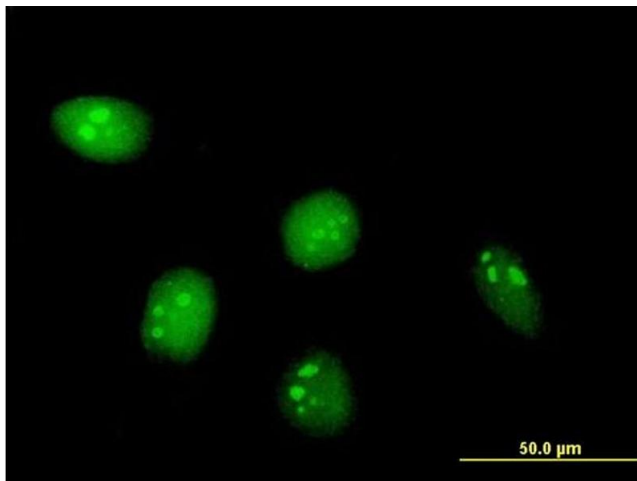
Application Details

| | |
|--------------------|--|
| Application Notes: | Optimal working dilution should be determined by the investigator. |
| Restrictions: | For Research Use only |

Handling

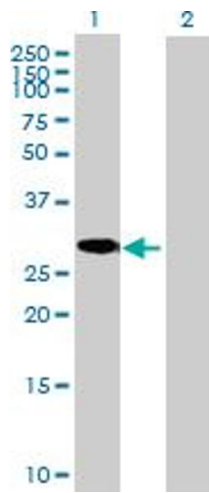
| | |
|------------------|--|
| Buffer: | In 1x PBS, pH 7.4 |
| Handling Advice: | Aliquot to avoid repeated freezing and thawing. |
| Storage: | -20 °C |
| Storage Comment: | Store at -20°C or lower. Aliquot to avoid repeated freezing and thawing. |

Images



Immunofluorescence

Image 1. Immunofluorescence of purified MaxPab antibody to C8orf33 on HeLa cell. [antibody concentration 10 ug/ml]



Western Blotting

Image 2. Western Blot analysis of C8orf33 expression in transfected 293T cell line by C8orf33 MaxPab polyclonal antibody.

Lane 1: C8orf33 transfected lysate(25.3 KDa).

Lane 2: Non-transfected lysate.