



Datasheet for ABIN528821  
**anti-LRRC61 antibody (AA 1-259)**



[Go to Product page](#)

1 Image

Overview

Quantity:	50 µg
Target:	LRRC61
Binding Specificity:	AA 1-259
Reactivity:	Human
Host:	Mouse
Clonality:	Polyclonal
Conjugate:	This LRRC61 antibody is un-conjugated
Application:	Western Blotting (WB)

Product Details

Purpose:	Mouse polyclonal antibody raised against a full-length human MGC3036 protein.
Immunogen:	MGC3036 (NP_076431, 1 a.a. ~ 259 a.a) full-length human protein.
Sequence:	MDPPAEKPGE AGGLQITPQL LKSRTGEFSL ESILLKLRG LGLADLGCLG ECLGLEWLDL SGNALTHLGP LASLRQLAVL NVSNRRLTGL EPLATCENLQ SLNAAGNLLA TPGQLQCLAG LPCLEYLRLR DPLARLSNPL CANPSYWAAV RELLPGLKVI DGERVIGRGS EFYQLCRDLD SSLRPSSSPG PRATEAQPWV EPGYWESWPS RSSSILEEAC RQFQDTLQEC WDLDRQASDS LAQAEQVLSS AGPTSSFVF
Cross-Reactivity:	Human
Characteristics:	Antibody reactive against mammalian transfected lysate.

## Target Details

Target:	LRRC61
Alternative Name:	LRRC61 ( <a href="#">LRRC61 Products</a> )
Background:	Full Gene Name: leucine rich repeat containing 61 Synonyms: FLJ22216,FLJ31392,HSPC295,MGC3036
Gene ID:	65999
NCBI Accession:	<a href="#">NM_023942</a>

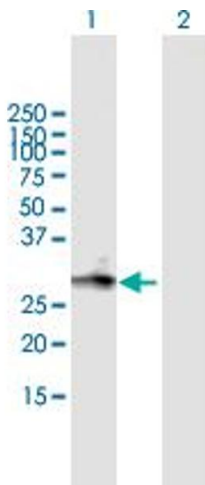
## Application Details

Application Notes:	Optimal working dilution should be determined by the investigator.
Restrictions:	For Research Use only

## Handling

Buffer:	In 1x PBS, pH 7.4
Handling Advice:	Aliquot to avoid repeated freezing and thawing.
Storage:	-20 °C
Storage Comment:	Store at -20°C or lower. Aliquot to avoid repeated freezing and thawing.

## Images



### Western Blotting

**Image 1.** Western Blot analysis of MGC3036 expression in transfected 293T cell line by MGC3036 MaxPab polyclonal antibody.

Lane 1: MGC3036 transfected lysate(28.49 KDa).

Lane 2: Non-transfected lysate.