



[Go to Product page](#)

Datasheet for ABIN528846

anti-SLX1A/GIYD2 antibody (AA 1-275)

1 Image

Overview

Quantity:	50 µg
Target:	SLX1A/GIYD2 (SLX1B)
Binding Specificity:	AA 1-275
Reactivity:	Human
Host:	Mouse
Clonality:	Polyclonal
Conjugate:	This SLX1A/GIYD2 antibody is un-conjugated
Application:	Western Blotting (WB)

Product Details

Purpose:	Mouse polyclonal antibody raised against a full-length human GIYD2 protein.
Immunogen:	GIYD2 (NP_076949.1, 1 a.a. ~ 275 a.a) full-length human protein.
Sequence:	MGPAGVAARP GRFFGVYLLY CLNPRYRGRV YVGFTVNTAR RVQQHNGGRK KGGAWRTSGR GPWEMVLVVH GFPSSVAALR FEWAHQHPHA SRRLAHVGPR LRGETAFAFH LRVLAHMLRA PPWARLPLTL RWVRPDLRQD LCLPPPHVP LAFGPPPPQA PAPRRRAGPF DDAEPEPDQG DPGACCSLCA QTIQDEEGLP CCPHPGCLLR AHVICLAEF LQEEPGQLLP LEGQCPCCEK SLLWGDLIWL CQMDTEKEVE DSELEEAHWT DLLET
Cross-Reactivity:	Human
Characteristics:	Antibody reactive against mammalian transfected lysate.

Target Details

Target:	SLX1A/GIYD2 (SLX1B)
Alternative Name:	GIYD2 (SLX1B Products)
Background:	Full Gene Name: GIY-YIG domain containing 2 Synonyms: FLJ23439,MGC2532,MGC5178
Gene ID:	79008
NCBI Accession:	NM_024044
Pathways:	DNA Damage Repair

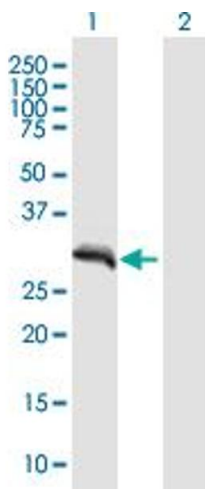
Application Details

Application Notes:	Optimal working dilution should be determined by the investigator.
Restrictions:	For Research Use only

Handling

Buffer:	In 1x PBS, pH 7.4
Handling Advice:	Aliquot to avoid repeated freezing and thawing.
Storage:	-20 °C
Storage Comment:	Store at -20°C or lower. Aliquot to avoid repeated freezing and thawing.

Images



Western Blotting

Image 1. Western Blot analysis of GIYD2 expression in transfected 293T cell line by GIYD2 MaxPab polyclonal antibody.

Lane 1: GIYD2 transfected lysate(30.25 KDa).

Lane 2: Non-transfected lysate.