



[Go to Product page](#)

Datasheet for ABIN528853  
**anti-CENPM antibody (AA 1-180)**

2 Images

Overview

Quantity:	100 µL
Target:	CENPM
Binding Specificity:	AA 1-180
Reactivity:	Human
Host:	Rabbit
Clonality:	Polyclonal
Conjugate:	This CENPM antibody is un-conjugated
Application:	Western Blotting (WB), Immunoprecipitation (IP)

Product Details

Purpose:	Rabbit polyclonal antibody raised against a full-length human CENPM protein.
Immunogen:	CENPM (NP_076958.1, 1 a.a. ~ 180 a.a) full-length human protein.
Sequence:	MSVLRPLDKL PGLNTATILL VGTEDALLQQ LADSMLEKEDC ASELKVHLAK SLPLPSSVNR PRIDLIVFVV NLHISKYSLQN TEESLRHVDA SFFLGKVCFL ATGAGRESHC SIHRHTVVKL AHTYQSPLLY CDLEVEGFRA TMAQRLVRVL QICAGHVPGV SALNLLSLLR SSEGPSLEDL
Cross-Reactivity:	Human
Characteristics:	Antibody reactive against mammalian transfected lysate.

Target Details

Target:	CENPM
---------	-------

## Target Details

Alternative Name:	CENPM ( <a href="#">CENPM Products</a> )
Background:	Full Gene Name: centromere protein M Synonyms: C22orf18,CENP-M,MGC861,PANE1,bK250D10.2
Gene ID:	79019
NCBI Accession:	<a href="#">NM_024053</a>

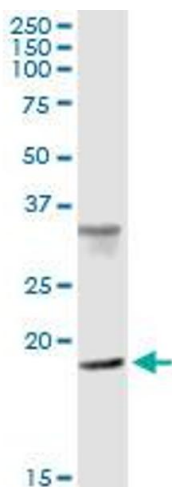
## Application Details

Application Notes:	Optimal working dilution should be determined by the investigator.
Restrictions:	For Research Use only

## Handling

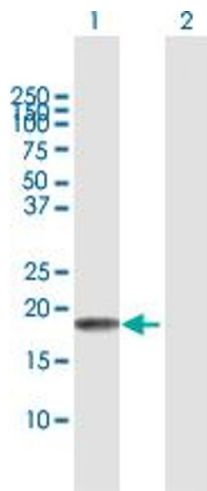
Format:	Liquid
Buffer:	No additive
Preservative:	Without preservative
Handling Advice:	Aliquot to avoid repeated freezing and thawing.
Storage:	-20 °C
Storage Comment:	Store at -20°C or lower. Aliquot to avoid repeated freezing and thawing.

## Images



### Immunoprecipitation

**Image 1.** Immunoprecipitation of CENPM transfected lysate using anti-CENPM MaxPab rabbit polyclonal antibody and Protein A Magnetic Bead , and immunoblotted with CENPM purified MaxPab mouse polyclonal antibody (B01P) .



### Western Blotting

**Image 2.** Western Blot analysis of CENPM expression in transfected 293T cell line by CENPM MaxPab polyclonal antibody.

Lane 1: CENPM transfected lysate(19.7 KDa).

Lane 2: Non-transfected lysate.