



[Go to Product page](#)

Datasheet for ABIN528860

anti-SPATA5L1 antibody (AA 1-426)

1 Image

Overview

Quantity:	100 µg
Target:	SPATA5L1
Binding Specificity:	AA 1-426
Reactivity:	Human
Host:	Rabbit
Clonality:	Polyclonal
Conjugate:	This SPATA5L1 antibody is un-conjugated
Application:	Western Blotting (WB)

Product Details

Purpose:	Rabbit polyclonal antibody raised against a full-length human SPATA5L1 protein.
Immunogen:	SPATA5L1 (AAH51861.1, 1 a.a. ~ 426 a.a) full-length human protein.
Sequence:	MAPDSDPFPE GPLLKLLPLD ARDRGTQRCR LGPAALHALG ARLGSAVKIS LPDGGSCSCLCT AWPRRDGADG FVQLDPLCAS PGAAVGASRS RRSLSLNRL LVPCLPLRRV AVWPVLRERA GAPGARNTAA VLEAAQELLR NRPISLGHVV VAPPGAPGLV AALHIVGGTP SPDPAGLVTP RTRVSLGGEP PSEAQPQPEV PLGGLSEAAD SLRELLRLPL RYPRALTALG LAVPRGVLLA GPPGVGKTQL VQAVAREAGA ELLAVSAPAL QGSRPGETEE NVRRVFQRAR ELASRGPSLL FLDEMDALCP QRGSRAPE SR VVAQVLTLLD GASGDREVVV VGATNRPDAL DPALRRPGRF DREVVIGTPT LKQRKEILQV ITSKMPISSH VDLGLLAEMT VGYVGADLTA LCREAAMHAL LHSEKN
Cross-Reactivity:	Human
Characteristics:	Antibody reactive against mammalian transfected lysate.

Target Details

Target:	SPATA5L1
Alternative Name:	SPATA5L1 (SPATA5L1 Products)
Background:	Full Gene Name: spermatogenesis associated 5-like 1 Synonyms: FLJ12286,MGC5347
Gene ID:	79029

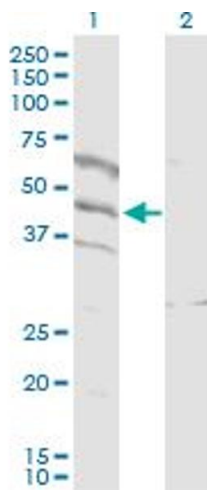
Application Details

Application Notes:	Optimal working dilution should be determined by the investigator.
Restrictions:	For Research Use only

Handling

Buffer:	In 1x PBS, pH 7.4
Handling Advice:	Aliquot to avoid repeated freezing and thawing.
Storage:	-20 °C
Storage Comment:	Store at -20°C or lower. Aliquot to avoid repeated freezing and thawing.

Images



Western Blotting

Image 1. Western Blot analysis of SPATA5L1 expression in transfected 293T cell line by SPATA5L1 MaxPab polyclonal antibody.

Lane 1: SPATA5L1 transfected lysate(44.70 kDa).

Lane 2: Non-transfected lysate.