

Datasheet for ABIN528891
anti-SLC25A23 antibody (AA 2-74)



[Go to Product page](#)

2 Images

Overview

Quantity:	100 µg
Target:	SLC25A23
Binding Specificity:	AA 2-74
Reactivity:	Human
Host:	Mouse
Clonality:	Monoclonal
Conjugate:	This SLC25A23 antibody is un-conjugated
Application:	ELISA, Western Blotting (WB)

Product Details

Purpose:	Mouse monoclonal antibody raised against a partial recombinant SLC25A23.
Immunogen:	SLC25A23 (NP_077008.2, 2 a.a. ~ 74 a.a) partial recombinant protein with GST tag. MW of the GST tag alone is 26 KDa.
Sequence:	RGSPGDAERR QRWGRLFEEL DSNKDGRVDV HELRQGLARL GGGNPDPGAQ QGISSEGDAD PDGGLDLEEF SRY
Clone:	3E1
Isotype:	IgG2a
Cross-Reactivity:	Human
Characteristics:	Antibody Reactive Against Recombinant Protein.

Target Details

Target:	SLC25A23
Alternative Name:	SLC25A23 (SLC25A23 Products)
Background:	Full Gene Name: solute carrier family 25 (mitochondrial carrier, phosphate carrier), member 23 Synonyms: APC2,MCSC2,MGC2615,SCaMC-3
Gene ID:	79085
NCBI Accession:	NM_024103

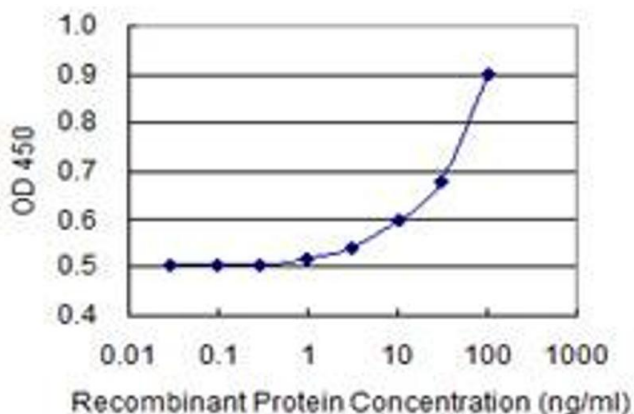
Application Details

Application Notes:	Optimal working dilution should be determined by the investigator.
Restrictions:	For Research Use only

Handling

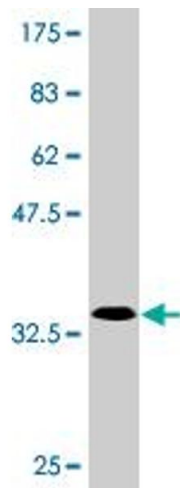
Buffer:	In 1x PBS, pH 7.4
Handling Advice:	Aliquot to avoid repeated freezing and thawing.
Storage:	-20 °C
Storage Comment:	Store at -20°C or lower. Aliquot to avoid repeated freezing and thawing.

Images



ELISA

Image 1. Detection limit for recombinant GST tagged SLC25A23 is 1 ng/ml as a capture antibody.



Western Blotting

Image 2. Western Blot detection against Immunogen (33.77 kDa).