



Datasheet for ABIN528898
anti-DHX58 antibody (AA 1-678)



[Go to Product page](#)

1 Image

Overview

Quantity:	50 µg
Target:	DHX58
Binding Specificity:	AA 1-678
Reactivity:	Human
Host:	Mouse
Clonality:	Polyclonal
Conjugate:	This DHX58 antibody is un-conjugated
Application:	Western Blotting (WB)

Product Details

Purpose:	Mouse polyclonal antibody raised against a full-length human DHX58 protein.
Immunogen:	DHX58 (AAH14949.1, 1 a.a. ~ 678 a.a) full-length human protein.
Sequence:	MELRSYQWEV IMPALEGKNI IWLPTGAGK TRAAAYVAKR HLETVDGAKV VVLVNRVHLV TQHGEFFRRM LDGRWTVTTL SGDMGPRAGF GHLARCHDLL ICTAELLQMA LTSPEEEHHV ELTVFSLIV DECHHHTKDT VYNVIMSQYL ELKLQRAQPL PQVLGLTASP GTGGASKLDG AINHVLQLCA NLDTWCIMSP QNCCPQLQEH SQPCKQYNL CHRRSQDPFG DLLKKLMDQI HDHLEMPELS RKFQTQMYEQ QVVKLSEAAA LAGLQEQRVY ALHLRRYNDL LLIHDTVRAV DALAALQDFY HREHVTKTQI LCAERLLAL FDDRKNELAH LATHGPENPK LEMLEKILQR QFSSNSPRG IIFTRTRQSA HSLLLWLQQQ QGLQTVDIRA QLLIGAGNSS QSTHMTQRDQ QEVQKFQDG TLNLLVATSV AEEGLDIPHC NVVVRYGLLT NEISMVQARG RARADQSVYA FVATEGSREL KRELINALE TLMEQAVAAV QKMDQAEYQA KIRDQQAAL TKRAAQAAQR ENQRQQFPVE HVQLLCINCM VAVGHGSDLR KVEGTHHVNV NPNFSNYYNV SRDPVVINKV

Product Details

FKDWKPGGVI SCRNCGEVWG LQMIYKSVKL PVLKVRSMML ETPQGRIQAK KWSRVPFVSP
DFDFLQHCAE NLSDSLSD

Cross-Reactivity: Human

Characteristics: Antibody reactive against mammalian transfected lysate.

Target Details

Target: DHX58

Alternative Name: DHX58 ([DHX58 Products](#))

Background: Full Gene Name: DEXH (Asp-Glu-X-His) box polypeptide 58

Synonyms: D11LGP2,D11lgp2e,LGP2

Gene ID: 79132

Application Details

Application Notes: Optimal working dilution should be determined by the investigator.

Restrictions: For Research Use only

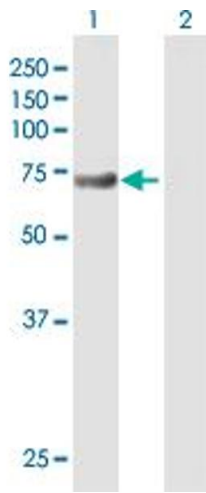
Handling

Buffer: In 1x PBS, pH 7.4

Handling Advice: Aliquot to avoid repeated freezing and thawing.

Storage: -20 °C

Storage Comment: Store at -20°C or lower. Aliquot to avoid repeated freezing and thawing.



Western Blotting

Image 1. Western Blot analysis of DHX58 expression in transfected 293T cell line by DHX58 MaxPab polyclonal antibody.

Lane 1: LGP2 transfected lysate(74.58 KDa).

Lane 2: Non-transfected lysate.