



[Go to Product page](#)

Datasheet for ABIN528921  
**anti-THTPA antibody (AA 1-230)**

2 Images

Overview

Quantity:	100 µL
Target:	THTPA
Binding Specificity:	AA 1-230
Reactivity:	Human
Host:	Rabbit
Clonality:	Polyclonal
Conjugate:	This THTPA antibody is un-conjugated
Application:	Western Blotting (WB), Immunoprecipitation (IP)

Product Details

Purpose:	Rabbit polyclonal antibody raised against a full-length human THTPA protein.
Immunogen:	THTPA (NP_077304.1, 1 a.a. ~ 230 a.a) full-length human protein.
Sequence:	MAQGLIEVER KFLPGPGTEE RLQELGGTLE YRVTFRDITY DPELSLMQA DHWLRRREDS GWELKCPGAA GVLGPHTYEK ELTAEPTIVA QLCKVLRADG LGAGDVA AVL GPLGLQEVAS FVTKRSAWKL VLLGADEEEP QLRVDLDTAD FGYAVGEVEA LVHEEA EVPT ALEKIHRLSS MLGVPAQETA PAKLIVYLQR FRPQDYQRLL EVNSSRERPQ ETEDPDHCLG
Cross-Reactivity:	Human
Characteristics:	Antibody reactive against mammalian transfected lysate.

Target Details

Target:	THTPA
---------	-------

## Target Details

Alternative Name:	THTPA ( <a href="#">THTPA Products</a> )
Background:	Full Gene Name: thiamine triphosphatase Synonyms: MGC2652,THTP,THTPASE
Gene ID:	79178
NCBI Accession:	<a href="#">NM_024328</a>
Pathways:	<a href="#">SARS-CoV-2 Protein Interactome</a>

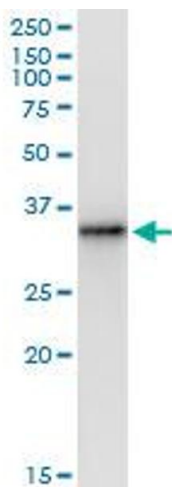
## Application Details

Application Notes:	Optimal working dilution should be determined by the investigator.
Restrictions:	For Research Use only

## Handling

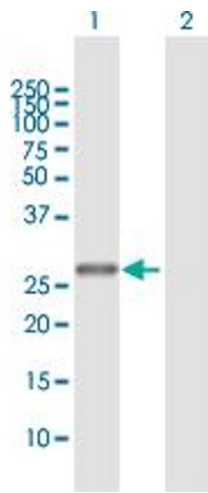
Format:	Liquid
Buffer:	No additive
Preservative:	Without preservative
Handling Advice:	Aliquot to avoid repeated freezing and thawing.
Storage:	-20 °C
Storage Comment:	Store at -20°C or lower. Aliquot to avoid repeated freezing and thawing.

## Images



### Immunoprecipitation

**Image 1.** Immunoprecipitation of THTPA transfected lysate using anti-THTPA MaxPab rabbit polyclonal antibody and Protein A Magnetic Bead , and immunoblotted with THTPA purified MaxPab mouse polyclonal antibody (B01P) .



### Western Blotting

**Image 2.** Western Blot analysis of THTPA expression in transfected 293T cell line by THTPA MaxPab polyclonal antibody.

Lane 1: THTPA transfected lysate(25.60 kDa).

Lane 2: Non-transfected lysate.