



[Go to Product page](#)

Datasheet for ABIN528941
anti-MMEL1 antibody (AA 1-779)

1 Image

Overview

Quantity:	50 µL
Target:	MMEL1
Binding Specificity:	AA 1-779
Reactivity:	Human
Host:	Mouse
Clonality:	Polyclonal
Conjugate:	This MMEL1 antibody is un-conjugated
Application:	Western Blotting (WB)

Product Details

Purpose:	Mouse polyclonal antibody raised against a full-length human MMEL1 protein.
Immunogen:	MMEL1 (AAI01031, 1 a.a. ~ 779 a.a) full-length human protein.
Sequence:	MGKSEGPVGM VESAGRAGQK RPGFLEGGLL LLLLLVTAAL VALGVLYADR RGKQLPRLAS RLCFLQEERT FVKRKPRGIP EAQEVSEVCT TPGCVIAAAR ILQNMDPTTE PCDDFYQFAC GGWLRRHVIP ETNSRYSIFD VLRDELEVIL KAVLENSTAK DRPAVEKART LYRSCMNQSV IEKRGSQPLL DILEVVGWGP VAMDRWNETV GLEWELERQL ALMNSQFNRR VLIDLFIWND DQNSSRHIY IDQPTLGMP S REYFNGGSN RKVREAYLQF MVSATLLRE DANLPRDSCL VQEDMVQVLE LETQLAKATV PQEERHDVIA LYHRMGLEEL QSQFGLKGFN WTLFIQTVLS SVKIKLLPDE EVVYIGIPYL QNLENIIDTY SARTIQNYLV WRLVLDRIGS LSQRFKDTRV NYRKALFGTM VEEVRWRECV GYVNSNMENA VGSLYVREAF PGDSKSMVRE LIDKVRTV FV ETLDELGWID EESKKKAQEK AMSIREQIGH PDYILEETNR RLDEEYSNLN FSEDLYFENS LQNLKVGAQR SLRKLREKVD PNLWIIGAAV VNAFYSPNRN QIVFPAGILQ PPFFSKEQPQ

Product Details

ALNFGGIGMV IGHEITHGFD DNGRNFDKNG NMMDWWSNFS TQHFREQSEC MIYQYGNYSW
DLADEQNVNG FNTLGENIAD NGGVRQAYKA YLKWMAEGGK DQQLPGLDLT HEQLFFINYA
QVWCGSYRPE FAIQSIKTDV HSPLKYRVLG SLQNLAADFAD TFHCARGTPM HPKERCRVW

Cross-Reactivity: Human

Characteristics: Antibody reactive against mammalian transfected lysate.

Target Details

Target: MMEL1

Alternative Name: MMEL1 ([MMEL1 Products](#))

Background: Full Gene Name: membrane metallo-endopeptidase-like 1
Synonyms: MGC119454,MGC119455,MGC119456,MMEL2,NEP2,NEPII,NL1,NL2,SEP

Gene ID: 79258

Application Details

Application Notes: Optimal working dilution should be determined by the investigator.

Restrictions: For Research Use only

Handling

Format: Liquid

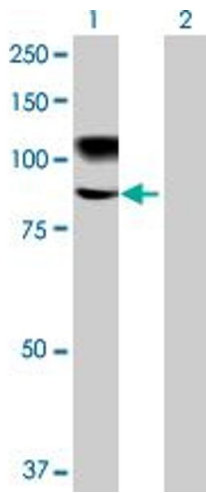
Buffer: No additive

Preservative: Without preservative

Handling Advice: Aliquot to avoid repeated freezing and thawing.

Storage: -20 °C

Storage Comment: Store at -20°C or lower. Aliquot to avoid repeated freezing and thawing.



Western Blotting

Image 1. Western Blot analysis of MMEL1 expression in transfected 293T cell line by MMEL1 MaxPab polyclonal antibody.

Lane 1: MELL1 transfected lysate(85.69 KDa).

Lane 2: Non-transfected lysate.