



[Go to Product page](#)

Datasheet for ABIN528942  
**anti-RSG1 antibody (AA 1-258)**

4 Images

Overview

Quantity:	100 µg
Target:	RSG1 (C1orf89)
Binding Specificity:	AA 1-258
Reactivity:	Human
Host:	Mouse
Clonality:	Monoclonal
Conjugate:	This RSG1 antibody is un-conjugated
Application:	Western Blotting (WB), ELISA, Immunohistochemistry (Paraffin-embedded Sections) (IHC (p)), Immunofluorescence (IF)

Product Details

Purpose:	Mouse monoclonal antibody raised against a full-length recombinant C1orf89.
Immunogen:	C1orf89 (AAH02946.1, 1 a.a. ~ 258 a.a) full-length recombinant protein with GST tag. MW of the GST tag alone is 26 KDa.
Sequence:	MARPPVPGSV VVPNWHESAE GKEYLACILR KNRRRVFGLL ERPVLLPPVS IDTASYKIFV SGKSGVGKTA LVAKLAGLEV PVVHHGTTGI QTTVVFWPAK LQASSRVVMF RFEFWDCGES ALKKFDHMLL ACMENTDAFL FLFSFTDRAS FEDLPGQLAR IAGEAPGVVR MVIGSKFDQY MHTDVPERDL TAFRQAWELP LLRVKSVPGR RLADGRTLGD RAGLADVVAHI LNGLAEQLWH QDQVAAGLLP NPPESAPE
Clone:	3G4
Isotype:	IgG2a

## Product Details

Cross-Reactivity:	Human
Characteristics:	Antibody Reactive Against Recombinant Protein.

## Target Details

Target:	RSG1 (C1orf89)
Alternative Name:	C1orf89 ( <a href="#">C1orf89 Products</a> )
Background:	Full Gene Name: chromosome 1 open reading frame 89 Synonyms: MGC10731,RP4-733M16.4
Gene ID:	79363

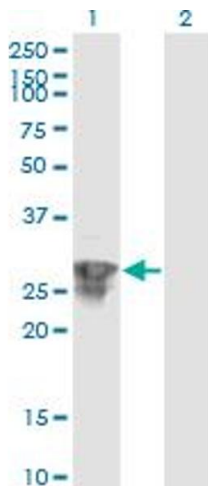
## Application Details

Application Notes:	Optimal working dilution should be determined by the investigator.
Restrictions:	For Research Use only

## Handling

Buffer:	In 1x PBS, pH 7.4
Handling Advice:	Aliquot to avoid repeated freezing and thawing.
Storage:	-20 °C
Storage Comment:	Store at -20°C or lower. Aliquot to avoid repeated freezing and thawing.

## Images

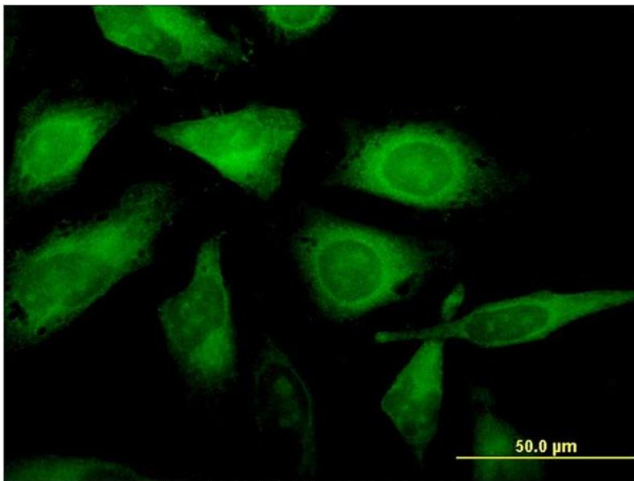


### Western Blotting

**Image 1.** Western Blot analysis of C1orf89 expression in transfected 293T cell line by C1orf89 monoclonal antibody (M02), clone 3G4.

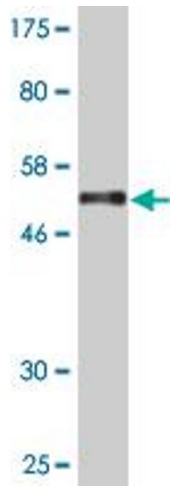
Lane 1: C1orf89 transfected lysate (Predicted MW: 28.4 KDa).

Lane 2: Non-transfected lysate.



### Immunofluorescence

**Image 2.** Immunofluorescence of monoclonal antibody to C1orf89 on HeLa cell. [antibody concentration 10 ug/ml]



### Western Blotting

**Image 3.** Western Blot detection against Immunogen (54.12 kDa).

Please check the [product details page](#) for more images. Overall 4 images are available for ABIN528942.