

Datasheet for ABIN528951
anti-KREMEN2 antibody (AA 1-420)



[Go to Product page](#)

1 Image

Overview

Quantity:	50 µg
Target:	KREMEN2
Binding Specificity:	AA 1-420
Reactivity:	Human
Host:	Mouse
Clonality:	Polyclonal
Conjugate:	This KREMEN2 antibody is un-conjugated
Application:	Western Blotting (WB)

Product Details

Purpose:	Mouse polyclonal antibody raised against a full-length human KREMEN2 protein.
Immunogen:	KREMEN2 (NP_078783.1, 1 a.a. ~ 420 a.a) full-length human protein.
Sequence:	MGTQALQGFL FLLFLPLLQP RGASAGSLHS PGLSECFQVN GADYRGHQNR TGPRGAGRPC LFWDQTQQHS YSSASDPHGR WGLGAHNFCR NPDGDVQPWC YVAETEEGIY WRYCDIPSCH MPGYLGCFVD SGAPPALSGP SGTSTKLTVQ VCLRFCRMKG YQLAGVEAGY ACFCGSESDL ARGRLAPATD CDQICFGHPG QLCGGDGR LG VYEVSVGSCQ GNWTAPQGVI YSPDFPDEYG PDRNCSWALG PPGAALELTF RLFELADPRD RLELRDAASG SLLRAFDGAR PPPSGPLRLG TAALLLTFRS DARGHAQGFA LTYRGLQDAA EDPEAPEGSA QTPAAPLDGA NVSCSPRPGA PPAAIGGAVC WLREKGP RRW GLPGAPGEAG LCGTNSPEGW PCPAPPGTPR LRVLPRATGL
Cross-Reactivity:	Human
Characteristics:	Antibody reactive against mammalian transfected lysate.

Target Details

Target:	KREMEN2
Alternative Name:	KREMEN2 (KREMEN2 Products)
Background:	Full Gene Name: kringle containing transmembrane protein 2 Synonyms: KRM2,MGC10791,MGC16709
Gene ID:	79412
NCBI Accession:	NM_024507
Pathways:	WNT Signaling

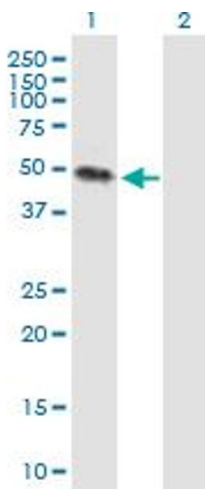
Application Details

Application Notes:	Optimal working dilution should be determined by the investigator.
Restrictions:	For Research Use only

Handling

Buffer:	In 1x PBS, pH 7.4
Handling Advice:	Aliquot to avoid repeated freezing and thawing.
Storage:	-20 °C
Storage Comment:	Store at -20°C or lower. Aliquot to avoid repeated freezing and thawing.

Images



Western Blotting

Image 1. Western Blot analysis of KREMEN2 expression in transfected 293T cell line by KREMEN2 MaxPab polyclonal antibody.

Lane1:KREMEN2 transfected lysate(46.2 KDa).

Lane2:Non-transfected lysate.