



[Go to Product page](#)

Datasheet for ABIN528953
anti-LRRC2 antibody (AA 272-371)

2 Images

Overview

Quantity:	50 µL
Target:	LRRC2
Binding Specificity:	AA 272-371
Reactivity:	Human
Host:	Mouse
Clonality:	Polyclonal
Conjugate:	This LRRC2 antibody is un-conjugated
Application:	ELISA, Western Blotting (WB)

Product Details

Purpose:	Mouse polyclonal antibody raised against a partial recombinant LRRC2.
Immunogen:	LRRC2 (NP_078788, 272 a.a. ~ 371 a.a) partial recombinant protein with GST tag.
Sequence:	LTYLPYSMLN LKKLTLVVVS GDHLVELPTA LCDSSTPLKF VSLMDNPIDN AQCEDGNEIM ESERDRQHFD KEVMKAYIED LKERESVPSY TTKVSFSLQL
Cross-Reactivity:	Human
Characteristics:	Antibody Reactive Against Recombinant Protein.

Target Details

Target:	LRRC2
Alternative Name:	LRRC2 (LRRC2 Products)

Target Details

Background:	Full Gene Name: leucine rich repeat containing 2 Synonyms:
Gene ID:	79442
NCBI Accession:	NM_024512

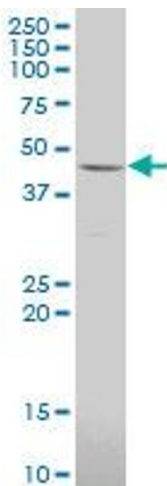
Application Details

Application Notes:	Optimal working dilution should be determined by the investigator.
Restrictions:	For Research Use only

Handling

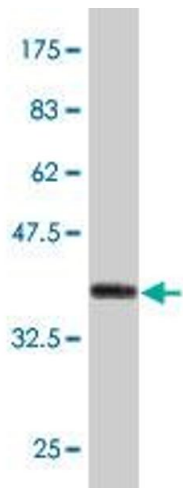
Format:	Liquid
Buffer:	50 % glycerol
Handling Advice:	Aliquot to avoid repeated freezing and thawing.
Storage:	-20 °C
Storage Comment:	Store at -20°C or lower. Aliquot to avoid repeated freezing and thawing.

Images



Western Blotting

Image 1. LRR2 polyclonal antibody (A01), Lot # 060717JCS1. Western Blot analysis of LRR2 expression in human ovarian cancer.



Western Blotting

Image 2. Western Blot detection against Immunogen (37.11 kDa).