



[Go to Product page](#)

Datasheet for ABIN529014
anti-LRRK1 antibody (AA 1-261)

2 Images

Overview

Quantity:	50 µg
Target:	LRRK1
Binding Specificity:	AA 1-261
Reactivity:	Human
Host:	Mouse
Clonality:	Polyclonal
Conjugate:	This LRRK1 antibody is un-conjugated
Application:	Western Blotting (WB)

Product Details

Purpose:	Mouse polyclonal antibody raised against a full-length human LRRK1 protein.
Immunogen:	LRRK1 (AAH68080.1, 1 a.a. ~ 261 a.a) full-length human protein.
Sequence:	MSQRPPSMYW CVGPEESAVC PERAMETLNG AGDTGGKPST RGGDPAARSR RTEGIRAAYR RGDRGGARDL LEEACDQCAS QLEKGQLLSI PAAYGDLEMV RYLLSKRLVE LPTEPTDDNP AVVAAYFGHT AVVQELLES L PGPCSPQRL N WMLALACQR GHLGVV KLLV LTHGADPESY AVRKNEFPVI VRLPLYAAIK SGNEDIAIFL LRHGAYFCSY ILLDSPDPSK HLLRKYFIEA SPLPSSYPGK TVSSHCLWSV F
Cross-Reactivity:	Human, Rat
Characteristics:	Antibody reactive against mammalian transfected lysate.

Target Details

Target:	LRRK1
Alternative Name:	LRRK1 (LRRK1 Products)
Background:	Full Gene Name: leucine-rich repeat kinase 1 Synonyms: FLJ23119,FLJ27465,KIAA1790,RIPK6,Roco1
Gene ID:	79705

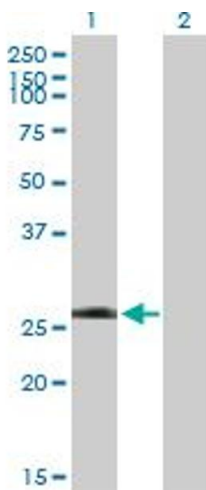
Application Details

Application Notes:	Optimal working dilution should be determined by the investigator.
Restrictions:	For Research Use only

Handling

Buffer:	In 1x PBS, pH 7.4
Handling Advice:	Aliquot to avoid repeated freezing and thawing.
Storage:	-20 °C
Storage Comment:	Store at -20°C or lower. Aliquot to avoid repeated freezing and thawing.

Images

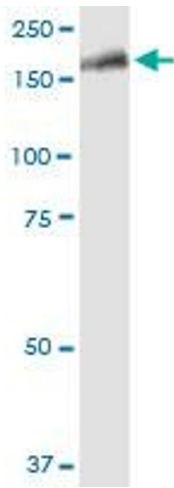


Western Blotting

Image 1. Western Blot analysis of LRRK1 expression in transfected 293T cell line by LRRK1 MaxPab polyclonal antibody.

Lane1:LRRK1 transfected lysate(28.71 KDa).

Lane2:Non-transfected lysate.



Western Blotting

Image 2. LRRK1 MaxPab polyclonal antibody. Western Blot analysis of LRRK1 expression in rat muscle.