



Datasheet for ABIN529028  
**anti-KCTD17 antibody (AA 1-290)**



[Go to Product page](#)

2 Images

Overview

Quantity:	50 µg
Target:	KCTD17
Binding Specificity:	AA 1-290
Reactivity:	Human
Host:	Mouse
Clonality:	Polyclonal
Conjugate:	This KCTD17 antibody is un-conjugated
Application:	Western Blotting (WB), Immunofluorescence (IF)

Product Details

Purpose:	Mouse polyclonal antibody raised against a full-length human KCTD17 protein.
Immunogen:	KCTD17 (NP_078957.1, 1 a.a. ~ 290 a.a) full-length human protein.
Sequence:	MRMEAGEAAP PAGAGGRAAG GWGKWVRLNV GGTVFLTTRQ TLCREQKSFL SRLCQGEELQ SDRDETGAYL IDRDPITYFGP ILNFLRHGKL VLDKDMAEEG VLEEAEFYNI GPLIRIIKDR MEEKDYTVTQ VPPKHVYRVL QCQEEELTQM VSTMSDGWRF EQLVNIGSSY NYGSEDQAEF LCVSKELHS TPNGLSSESS RKTKEEQL EEQQQEEEV EEEVEQVQV EADAQEKGSR PHPLRPEAEL AVRASPRPLA RPQSCHPCCY KPEAPGCEAP DHLQGLGVPI
Cross-Reactivity:	Human
Characteristics:	Antibody reactive against mammalian transfected lysate.

## Target Details

Target:	KCTD17
Alternative Name:	KCTD17 ( <a href="#">KCTD17 Products</a> )
Background:	Full Gene Name: potassium channel tetramerisation domain containing 17 Synonyms: FLJ12242,FLJ98761
Gene ID:	79734
NCBI Accession:	<a href="#">NM_024681</a>

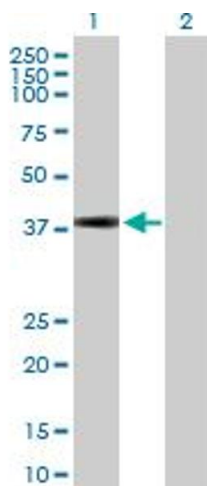
## Application Details

Application Notes:	Optimal working dilution should be determined by the investigator.
Restrictions:	For Research Use only

## Handling

Buffer:	In 1x PBS, pH 7.4
Handling Advice:	Aliquot to avoid repeated freezing and thawing.
Storage:	-20 °C
Storage Comment:	Store at -20°C or lower. Aliquot to avoid repeated freezing and thawing.

## Images

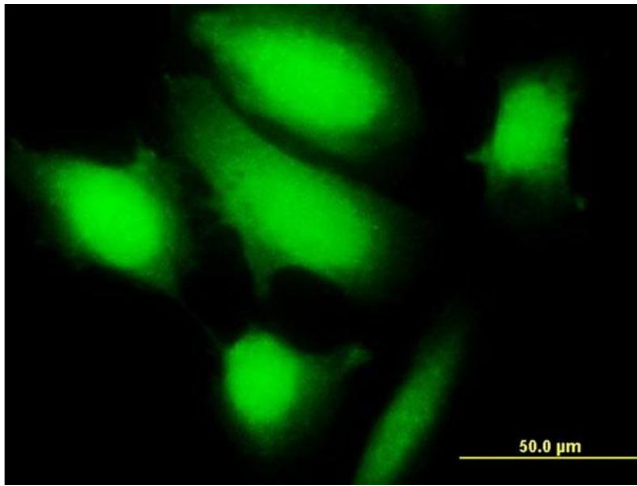


### Western Blotting

**Image 1.** Western Blot analysis of KCTD17 expression in transfected 293T cell line by KCTD17 MaxPab polyclonal antibody.

Lane 1: KCTD17 transfected lysate(32.50 KDa).

Lane 2: Non-transfected lysate.



### Immunofluorescence

**Image 2.** Immunofluorescence of purified MaxPab antibody to KCTD17 on HeLa cell. [antibody concentration 10 ug/ml]