

Datasheet for ABIN529033  
**anti-SNIP1 antibody (AA 1-396)**



[Go to Product page](#)

2 Images

Overview

Quantity:	50 µL
Target:	SNIP1
Binding Specificity:	AA 1-396
Reactivity:	Human
Host:	Mouse
Clonality:	Polyclonal
Conjugate:	This SNIP1 antibody is un-conjugated
Application:	Western Blotting (WB), Immunofluorescence (IF)

Product Details

Purpose:	Mouse polyclonal antibody raised against a full-length human SNIP1 protein.
Immunogen:	SNIP1 (NP_078976.2, 1 a.a. ~ 396 a.a) full-length human protein.
Sequence:	MKAVKSERER GSRRRHRDGD VVLPAGVVVK QERLSPEVAP PAHRRPDHSG GSPSPPTSEP ARSGHRGNRA RGVSRSPPKK KNKASGRRSK SPRSKRNRSP HHSTVKVKQE REDHPRRGRE DRQHREPSEQ EHRRARNSDR DRHRGHSHQR RTSNERPGSG QGQGRDRDTQ NLQAQEEERE FYNARRREHR QRNDVGGGGS ESQELVPRPG GNNKEKEVPA KEKPSFELSG ALLEDTNTFR GVVIKYSEPP EARIPKKRWR LYPFKNDEVL PVMYIHRQSA YLLGRHRIA DIPIDHPSCS KQHAVFYRL VEYTRADGTV GRRVKPYIID LGSGNGTFLN NKRIEQRYY ELKEKDVLKF GFSSREYVLL HESSDTSEID RKDDEDEEEEE EEVSDS
Cross-Reactivity:	Human
Characteristics:	Antibody reactive against mammalian transfected lysate.

## Target Details

---

Target:	SNIP1
Alternative Name:	SNIP1 ( <a href="#">SNIP1 Products</a> )
Background:	Full Gene Name: Smad nuclear interacting protein 1 Synonyms: FLJ12553,RP3-423B22.3,dJ423B22.2
Gene ID:	79753
NCBI Accession:	<a href="#">NM_024700</a>
Pathways:	<a href="#">SARS-CoV-2 Protein Interactome</a> , <a href="#">The Global Phosphorylation Landscape of SARS-CoV-2 Infection</a>

## Application Details

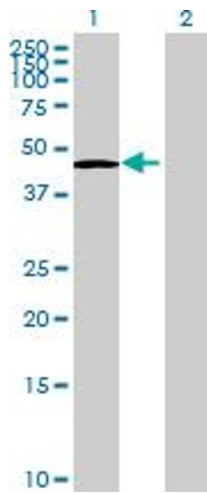
---

Application Notes:	Optimal working dilution should be determined by the investigator.
Restrictions:	For Research Use only

## Handling

---

Format:	Liquid
Buffer:	No additive
Preservative:	Without preservative
Handling Advice:	Aliquot to avoid repeated freezing and thawing.
Storage:	-20 °C
Storage Comment:	Store at -20°C or lower. Aliquot to avoid repeated freezing and thawing.

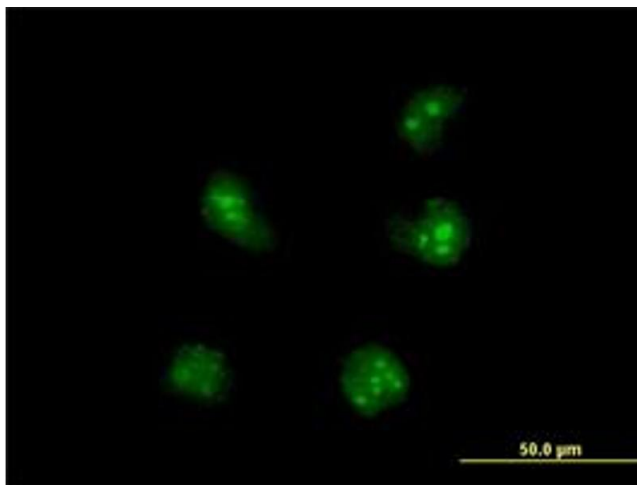


### Western Blotting

**Image 1.** Western Blot analysis of SNIP1 expression in transfected 293T cell line by SNIP1 MaxPab polyclonal antibody.

Lane 1: SNIP1 transfected lysate(43.56 kDa).

Lane 2: Non-transfected lysate.



### Immunofluorescence

**Image 2.** Immunofluorescence of purified MaxPab antibody to SNIP1 on HeLa cell. (antibody concentration 10 μg/mL)