



[Go to Product page](#)

Datasheet for ABIN529103  
**anti-RBFA antibody (AA 1-343)**

1 Image

Overview

Quantity:	50 µg
Target:	RBFA
Binding Specificity:	AA 1-343
Reactivity:	Human
Host:	Mouse
Clonality:	Polyclonal
Conjugate:	This RBFA antibody is un-conjugated
Application:	Western Blotting (WB)

Product Details

Purpose:	Mouse polyclonal antibody raised against a full-length human C18orf22 protein.
Immunogen:	C18orf22 (AAH14195, 1 a.a. ~ 343 a.a) full-length human protein.
Sequence:	MWAAAGGLWR SRAGLRALFR SRDAALFPGC ERGLHCSAVS CKNWLKFFAS KTKKKVWYES PSLGSHSTYK PSKLEFLMRS TSKKTRKEDH ARLRALNGLL YKALTDLLCT PEVSQELYDL NVELSKVSLT PDFSACRAYW KTTLSAEQNA HMEAVLQRSA AHMRHLLMSQ QTLRNVPIV FVQDKGNAAL AELDQLLAVA DFGPRDERDN FVQNDFRDPD APQPCGTTEP TTSSSLCGID HEALNKQIME YKRRKDKGLG GLVWQGQVAE LTTQMKGGRK RAKPRLEQDS SLKSYLSGEE VEDDLDLVGA PEYECYAPDT EELEAERGGG RTEDGHSCGA SRE
Cross-Reactivity:	Human
Characteristics:	Antibody reactive against mammalian transfected lysate.

## Target Details

Target:	RBFA
Alternative Name:	C18orf22 ( <a href="#">RBFA Products</a> )
Background:	Full Gene Name: chromosome 18 open reading frame 22 Synonyms: FLJ21172,HsT169
Gene ID:	79863

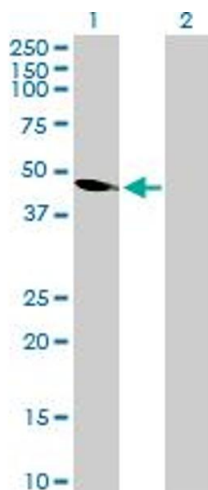
## Application Details

Application Notes:	Optimal working dilution should be determined by the investigator.
Restrictions:	For Research Use only

## Handling

Buffer:	In 1x PBS, pH 7.4
Handling Advice:	Aliquot to avoid repeated freezing and thawing.
Storage:	-20 °C
Storage Comment:	Store at -20°C or lower. Aliquot to avoid repeated freezing and thawing.

## Images



### Western Blotting

**Image 1.** Western Blot analysis of C18orf22 expression in transfected 293T cell line by C18orf22 MaxPab polyclonal antibody.

Lane 1: C18orf22 transfected lysate(37.84 KDa).

Lane 2: Non-transfected lysate.