



[Go to Product page](#)

Datasheet for ABIN529107  
**anti-BAALC antibody (AA 1-145)**

1 Image

Overview

Quantity:	50 µg
Target:	BAALC
Binding Specificity:	AA 1-145
Reactivity:	Human
Host:	Mouse
Clonality:	Polyclonal
Conjugate:	This BAALC antibody is un-conjugated
Application:	Western Blotting (WB)

Product Details

Purpose:	Mouse polyclonal antibody raised against a full-length human BAALC protein.
Immunogen:	BAALC (NP_079088.1, 1 a.a. ~ 145 a.a) full-length human protein.
Sequence:	MGCGGSRADA IEPRIYESWT RETESTWLTY TDSDAPPSAA APDSGPEAGG LHSGMLEDGL PSNGVPRSTA PGGIPNPEKK TNCETQCPNP QSLSSGPLTQ KQNGLQTTEA KRDAKRMPAK EVTINVTDSI QQMDRSRRIT KNCVN
Cross-Reactivity:	Human
Characteristics:	Antibody reactive against mammalian transfected lysate.

Target Details

Target:	BAALC
---------	-------

## Target Details

Alternative Name:	BAALC ( <a href="#">BAALC Products</a> )
Background:	Full Gene Name: brain and acute leukemia, cytoplasmic Synonyms: FLJ12015
Gene ID:	79870
NCBI Accession:	<a href="#">NM_024812</a>

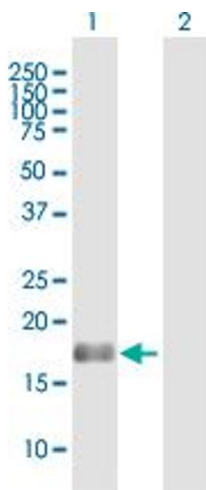
## Application Details

Application Notes:	Optimal working dilution should be determined by the investigator.
Restrictions:	For Research Use only

## Handling

Buffer:	In 1x PBS, pH 7.4
Handling Advice:	Aliquot to avoid repeated freezing and thawing.
Storage:	-20 °C
Storage Comment:	Store at -20°C or lower. Aliquot to avoid repeated freezing and thawing.

## Images



### Western Blotting

**Image 1.** Western Blot analysis of BAALC expression in transfected 293T cell line by BAALC MaxPab polyclonal antibody.

Lane 1: BAALC transfected lysate(15.95 KDa).

Lane 2: Non-transfected lysate.