



[Go to Product page](#)

Datasheet for ABIN529161
anti-ESRP2 antibody (AA 1-717)

1 Image

Overview

Quantity:	50 µg
Target:	ESRP2
Binding Specificity:	AA 1-717
Reactivity:	Human
Host:	Mouse
Clonality:	Polyclonal
Conjugate:	This ESRP2 antibody is un-conjugated
Application:	Western Blotting (WB)

Product Details

Purpose:	Mouse polyclonal antibody raised against a full-length human RBM35B protein.
Immunogen:	RBM35B (NP_079215.2, 1 a.a. ~ 717 a.a) full-length human protein.
Sequence:	MTPPPPPPPP PGPDPAADPA ADPCPWP GSL VVLFGATAGA LGRDLGSD ET DLILLVWQV V EPRSRQVGTL HKSLVRAEAA ALSTQCREAS GLSADSLARA EPLDKVLQQF SQLVNGDVAL LGGGPYMLCT DGQQLLRQVL HPEASRKNLV LPDMFFSFYD LRREFHMQHP STCPARDLTV ATMAQGLGLE TDATEDDFGV WEVKTMVAVI LHLLKEPSSQ LFSKPEVIKQ KYETGPCSKA DVVDSETVVR ARGLPWQSSD QDVARFFKGL NVARGGVALC LNAQGRRNGE ALIRFVDSEQ RDLALQRHKH HMGVRYIEVY KATGEEFVKI AGGTSLEVAR FLSREDQVIL RLRGLPFSAG PTDVLGFLGP ECPVTGGTEG LLFVRHPDGR PTGDALFA CEELAQAALR RHKGMLGKRY IELFRSTAAE VQQLNRYAS GPLLPTLTAP LLPIPFPLAP GTGRDCVRLR GLPYTATIED ILSFLGEGAAA DIRPHGVH MV LNQQGRPSGD AFIQMTSAER ALAAAQRCHK KVMKERYVEV VPCSTEEMSR VLMGGTLGRS GMSPPCKLP CLSPPTYTTF QATPTLIPT E TAALYPSSAL

Product Details

LPAARVPAAP TPVAYYPGPA TQLYLNNTAY YPSPPVSPPTT VGYLTTPTAA LASAPTSVLS
QSGALVRMQG VPYTAGMKDL LSVFQAYQLP ADDYTSMLMPV GDPPTVLQA PKEWVCL

Cross-Reactivity: Human

Characteristics: Antibody reactive against mammalian transfected lysate.

Target Details

Target: ESRP2

Alternative Name: RBM35B ([ESRP2 Products](#))

Background: Full Gene Name: RNA binding motif protein 35B

Synonyms: FLJ21918,FLJ22248

Gene ID: 80004

NCBI Accession: [NM_024939](#)

Application Details

Application Notes: Optimal working dilution should be determined by the investigator.

Restrictions: For Research Use only

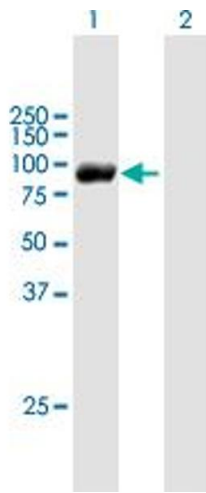
Handling

Buffer: In 1x PBS, pH 7.4

Handling Advice: Aliquot to avoid repeated freezing and thawing.

Storage: -20 °C

Storage Comment: Store at -20°C or lower. Aliquot to avoid repeated freezing and thawing.



Western Blotting

Image 1. Western Blot analysis of RBM35B expression in transfected 293T cell line by RBM35B MaxPab polyclonal antibody.

Lane 1: RBM35B transfected lysate(77.40 KDa).

Lane 2: Non-transfected lysate.