



[Go to Product page](#)

Datasheet for ABIN529165
anti-RMI1 antibody (AA 1-470)

2 Images

Overview

Quantity:	50 µg
Target:	RMI1
Binding Specificity:	AA 1-470
Reactivity:	Human
Host:	Mouse
Clonality:	Polyclonal
Conjugate:	This RMI1 antibody is un-conjugated
Application:	Western Blotting (WB), Immunofluorescence (IF)

Product Details

Purpose:	Mouse polyclonal antibody raised against a full-length human RMI1 protein.
Immunogen:	RMI1 (AAH64937.1, 1 a.a. ~ 470 a.a) full-length human protein.
Sequence:	MNVT SIALRA ETWLLAAWHV KVPPMWLEAC INWIQEENNN VNLSQAQMNK QVFEQWLLTD LRDLEHPLLP DGILEIPKGE LNGFYALQIN SLVDVSQPAH SSIQKLRGKN TTNDLVTAEA QVTPKPWEAK PSRMLMLQLT DGIVQIQGME YQPIPIHSD LPPGTKILY GNISFRLGVL LLKPENVKVL GGEVDALLEE YAQEKVLARL IGEPDLVSV IPNNSNENIP RVTDVLDPAL GPSDEELLAS LDENDEL TAN NDTSSERCFT TGSSSNTIPT RQSSFEPEFV ISPRPKEEPS NLSIHVMDGE LDDFSLEEAL LLEETVQKEQ METKELQPLT FNRNADRSIE RFSHNPNTTN NFSLTCKNGN NNWSEKNVSE QMTNEDKSFG CPSVRDQNRS IFSVHCNVPL AHDFTNKEKN LETDNKIKQT SSSDSHSLNN KILIERWSTM YRKG IHKFLM KMIVYRVVL
Cross-Reactivity:	Human

Product Details

Characteristics: Antibody reactive against mammalian transfected lysate.

Target Details

Target: RMI1

Alternative Name: RMI1 ([RMI1 Products](#))

Background: Full Gene Name: RMI1, RecQ mediated genome instability 1, homolog (S. cerevisiae)
Synonyms: BLAP75,C9orf76,FLJ12888,RP11-346I8.1

Gene ID: 80010

Pathways: [DNA Damage Repair](#)

Application Details

Application Notes: Optimal working dilution should be determined by the investigator.

Restrictions: For Research Use only

Handling

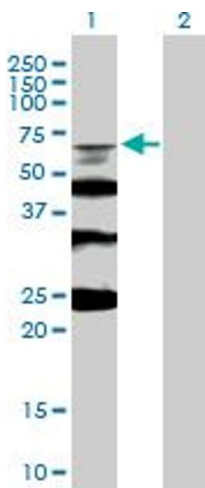
Buffer: In 1x PBS, pH 7.4

Handling Advice: Aliquot to avoid repeated freezing and thawing.

Storage: -20 °C

Storage Comment: Store at -20°C or lower. Aliquot to avoid repeated freezing and thawing.

Images

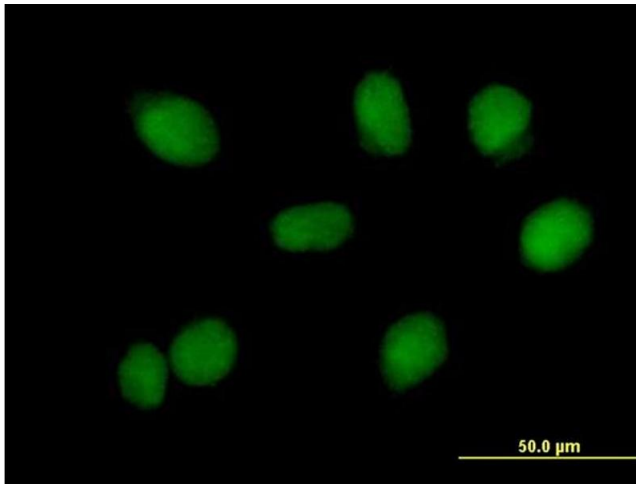


Western Blotting

Image 1. Western Blot analysis of RMI1 expression in transfected 293T cell line by RMI1 MaxPab polyclonal antibody.

Lane 1: C9orf76 transfected lysate(51.7 kDa).

Lane 2: Non-transfected lysate.



Immunofluorescence

Image 2. Immunofluorescence of purified MaxPab antibody to RMI1 on HeLa cell. [antibody concentration 10 ug/ml]