



Datasheet for ABIN529189
anti-PTGES2 antibody (AA 1-377)



[Go to Product page](#)

1 Image

Overview

Quantity:	50 µg
Target:	PTGES2
Binding Specificity:	AA 1-377
Reactivity:	Human
Host:	Mouse
Clonality:	Polyclonal
Conjugate:	This PTGES2 antibody is un-conjugated
Application:	Western Blotting (WB)

Product Details

Purpose:	Mouse polyclonal antibody raised against a full-length human PTGES2 protein.
Immunogen:	PTGES2 (NP_079348.1, 1 a.a. ~ 377 a.a) full-length human protein.
Sequence:	MDPAARVVRA LWPGGCALAW RLGGRPQPLL PTQSRAGFAG AAGGPSPVAA ARKGSPRLLG AAALALGGAL GLYHTARWHL RAQDLHAERS AAQLSLSSRL QLTYQYKTC PFC SKVRAFL DFHALPYQVV EVNPVRRAEI KFSSYRKVPI LVAQEGESSQ QLNDSSVIIS ALKTYLVSGQ PLEEIITYYP AMKAVNEQ GK EVTEFGNKYW LMLNEKEAQQ VYGGKEARTE EMKWRQWADD WLVHLISPNV YRTPTEALAS FDYIVREGKF GAVEGAVAKY MGAAAMY LIS KRLKSRHRLQ DNVREDLYEA ADKWVA AVGK DRPFMGGQKP NLADLAVYGV LRVMEGLDAF DDLMQHTHIQ PWYLRVERAI TEASPAH
Cross-Reactivity:	Human
Characteristics:	Antibody reactive against mammalian transfected lysate.

Target Details

Target: PTGES2

Alternative Name: PTGES2 ([PTGES2 Products](#))

Background: Full Gene Name: prostaglandin E synthase 2
Synonyms: C9orf15,FLJ14038,GBF1,MGC11289,PGES2,mPGES-2

Gene ID: 80142

NCBI Accession: [NM_025072](#)

Pathways: [Interferon-gamma Pathway](#), [Cell RedoxHomeostasis](#), [SARS-CoV-2 Protein Interactome](#)

Application Details

Application Notes: Optimal working dilution should be determined by the investigator.

Restrictions: For Research Use only

Handling

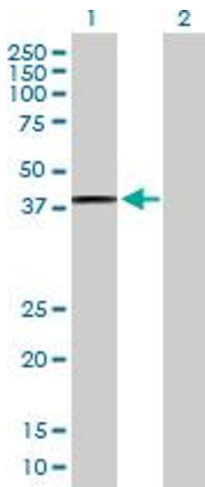
Buffer: In 1x PBS, pH 7.4

Handling Advice: Aliquot to avoid repeated freezing and thawing.

Storage: -20 °C

Storage Comment: Store at -20°C or lower. Aliquot to avoid repeated freezing and thawing.

Images



Western Blotting

Image 1. Western Blot analysis of PTGES2 expression in transfected 293T cell line by PTGES2 MaxPab polyclonal antibody.

Lane1:PTGES2 transfected lysate(41.47 KDa).

Lane2:Non-transfected lysate.