



Datasheet for ABIN529190  
**anti-PTGES2 antibody (AA 1-377)**



[Go to Product page](#)

2 Images

Overview

Quantity:	100 µL
Target:	PTGES2
Binding Specificity:	AA 1-377
Reactivity:	Human
Host:	Rabbit
Clonality:	Polyclonal
Conjugate:	This PTGES2 antibody is un-conjugated
Application:	Western Blotting (WB), Immunoprecipitation (IP)

Product Details

Purpose:	Rabbit polyclonal antibody raised against a full-length human PTGES2 protein.
Immunogen:	PTGES2 (NP_079348.1, 1 a.a. ~ 377 a.a) full-length human protein.
Sequence:	MDPAARVVRA LWPGGCALAW RLGGRPQPLL PTQSRAGFAG AAGGPPSPVAA ARKGSPRLLG AAALALGGAL GLYHTARWHL RAQDLHAERS AAQLSLSSRL QLTLYQYKTC PFC SKVRAFL DFHALPYQVV EVNPVRRAEI KFSSYRKVPI LVAQEGESSQ QLNDSSVIIS ALKTYLVSGQ PLEEIITYYP AMKAVNEQ GK EVTEFGNKYW LMLNEKEAQQ VYGGKEARTE EMKWRQWADD WLVLHISP NV YRTPTEALAS FDYIVREGKF GAVEGAVAKY MGAAAMY LIS KRLKSRHRLQ DNVREDLYEA ADKWVA AVGK DRPFMGGQKP NLADLAVYGV LRVMEGLDAF DDLMQHHTHIQ PWYLRVERAI TEASPAH
Cross-Reactivity:	Human
Characteristics:	Antibody reactive against mammalian transfected lysate.

## Target Details

Target:	PTGES2
Alternative Name:	PTGES2 ( <a href="#">PTGES2 Products</a> )
Background:	Full Gene Name: prostaglandin E synthase 2 Synonyms: C9orf15,FLJ14038,GBF1,MGC11289,PGES2,mPGES-2
Gene ID:	80142
NCBI Accession:	<a href="#">NM_025072</a>
Pathways:	<a href="#">Interferon-gamma Pathway</a> , <a href="#">Cell RedoxHomeostasis</a> , <a href="#">SARS-CoV-2 Protein Interactome</a>

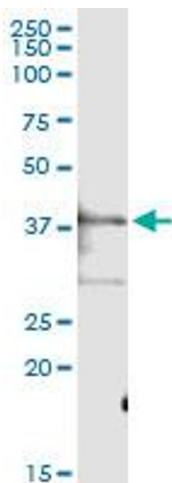
## Application Details

Application Notes:	Optimal working dilution should be determined by the investigator.
Restrictions:	For Research Use only

## Handling

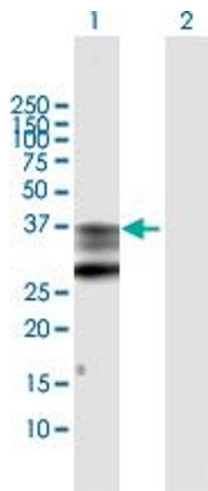
Format:	Liquid
Buffer:	No additive
Preservative:	Without preservative
Handling Advice:	Aliquot to avoid repeated freezing and thawing.
Storage:	-20 °C
Storage Comment:	Store at -20°C or lower. Aliquot to avoid repeated freezing and thawing.

## Images



### Immunoprecipitation

**Image 1.** Immunoprecipitation of PTGES2 transfected lysate using anti-PTGES2 MaxPab rabbit polyclonal antibody and Protein A Magnetic Bead , and immunoblotted with PTGES2 purified MaxPab mouse polyclonal antibody (B01P)



### Western Blotting

**Image 2.** Western Blot analysis of PTGES2 expression in transfected 293T cell line by PTGES2 MaxPab polyclonal antibody.

Lane 1: PTGES2 transfected lysate(41.9 kDa).

Lane 2: Non-transfected lysate.