



[Go to Product page](#)

Datasheet for ABIN529205

anti-SPSB1 antibody (AA 1-273)

1 Image

Overview

Quantity:	100 µg
Target:	SPSB1
Binding Specificity:	AA 1-273
Reactivity:	Human
Host:	Mouse
Clonality:	Monoclonal
Conjugate:	This SPSB1 antibody is un-conjugated
Application:	ELISA

Product Details

Purpose:	Mouse monoclonal antibody raised against a full-length recombinant SPSB1.
Immunogen:	SPSB1 (AAH15711, 1 a.a. ~ 273 a.a) full-length recombinant protein with GST tag. MW of the GST tag alone is 26 KDa.
Sequence:	MGQKVTGGIK TVDMRDPTYR PLKQELQGLD YCKPTRDLL LDMPPVSYDV QLLHSWNNND RSLNVFVKED DKLIFHRHPV AQSTDAIRGK VGYTRGLHVW QITWAMRQRG THAVGVATA DAPLHSVGYT TLVGNNHESW GWDLGRNRLY HDDKNQPSKT YPAFLEPDET FIVPDSFLVA LDMDDGTLSF IVDGQYMGVA FRGLKGKKLY PVVSAVWGHC EIRMRYLNGL DPEPLPLMDL CRRSVRLALG RERLGEIHTL PLPASLKAYL LYQ
Clone:	3E7
Isotype:	IgG2a
Cross-Reactivity:	Human

Product Details

Characteristics: Antibody Reactive Against Recombinant Protein.

Target Details

Target: SPSB1

Alternative Name: SPSB1 ([SPSB1 Products](#))

Background: Full Gene Name: splA/ryanodine receptor domain and SOCS box containing 1
Synonyms: SSB-1,SSB1

Gene ID: 80176

Application Details

Application Notes: Optimal working dilution should be determined by the investigator.

Restrictions: For Research Use only

Handling

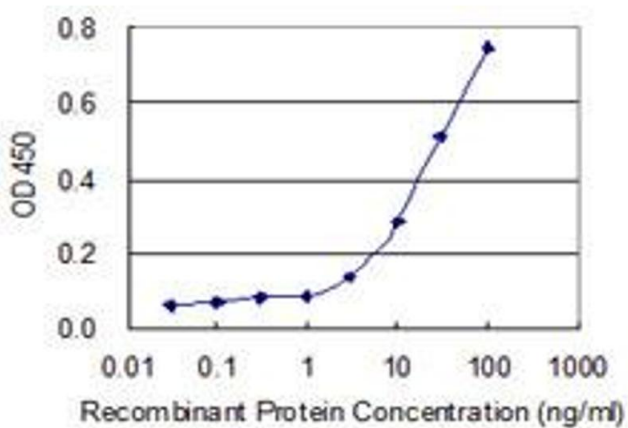
Buffer: In 1x PBS, pH 7.4

Handling Advice: Aliquot to avoid repeated freezing and thawing.

Storage: -20 °C

Storage Comment: Store at -20°C or lower. Aliquot to avoid repeated freezing and thawing.

Images



ELISA

Image 1. Detection limit for recombinant GST tagged SPSB1 is 1 ng/ml as a capture antibody.