

Datasheet for ABIN529221  
**anti-SPG11 antibody (AA 1-425)**



[Go to Product page](#)

1 Image

## Overview

Quantity:	50 µg
Target:	SPG11
Binding Specificity:	AA 1-425
Reactivity:	Human
Host:	Mouse
Clonality:	Polyclonal
Conjugate:	This SPG11 antibody is un-conjugated
Application:	Western Blotting (WB)

## Product Details

Purpose:	Mouse polyclonal antibody raised against a full-length human SPG11 protein.
Immunogen:	SPG11 (AAH24161.1, 1 a.a. ~ 425 a.a) full-length human protein.
Sequence:	MLRKILASQQ PDRCKRAQAF ISTQGLKPDT VAELVAEEVT RELTSSQGT GHKQMFNPTE ESQTFLLQLTT LCQDRTLVMG KLLDKISSVP HGELSCTTEL LILAHHCFTL TCHMEGIIRV LQAAHMLTDN HLAPEEYGL VVRLLTGIGR YNEMTYIFDL LHKKHVFEVL MRKKLDPSGT LKTALLDYIK RCRPGDSEKH NMIALCFSMC REIGENHEAA ARIQLKLIES QPWEDSLKDG HQLKQLLLKA LTLMLDAAES YAKDSCVRQA QHCQRLTKLI TLQIHFLNTG QNTMLINLGR HKLMDCILAL PRFYQASIVA EAYDFVPDWA EILYQQVILK GDFNYLEEFK QORLLKSSIF EEISKKYKQH QPTDMVMENL KKLLTYCEDV YLYYKLAYEH KFYEIVNVLL KDPQTGCCLK DMLAG
Cross-Reactivity:	Human
Characteristics:	Antibody reactive against mammalian transfected lysate.

## Target Details

Target:	SPG11
Alternative Name:	SPG11 ( <a href="#">SPG11 Products</a> )
Background:	Full Gene Name: spastic paraplegia 11 (autosomal recessive) Synonyms: DKFZp762B1512,FLJ21439,KIAA1840,SPATACSIN
Gene ID:	80208

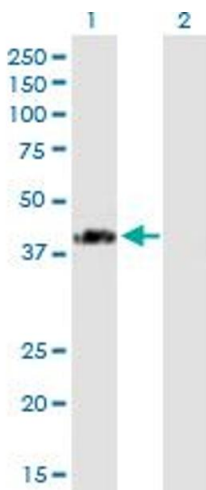
## Application Details

Application Notes:	Optimal working dilution should be determined by the investigator.
Restrictions:	For Research Use only

## Handling

Buffer:	In 1x PBS, pH 7.4
Handling Advice:	Aliquot to avoid repeated freezing and thawing.
Storage:	-20 °C
Storage Comment:	Store at -20°C or lower. Aliquot to avoid repeated freezing and thawing.

## Images



### Western Blotting

**Image 1.** Western Blot analysis of SPG11 expression in transfected 293T cell line by SPG11 MaxPab polyclonal antibody.

Lane 1: SPG11 transfected lysate(46.75 KDa).

Lane 2: Non-transfected lysate.