



[Go to Product page](#)

Datasheet for ABIN529233  
**anti-CXorf21 antibody (AA 1-301)**

2 Images

Overview

Quantity:	50 µg
Target:	CXorf21
Binding Specificity:	AA 1-301
Reactivity:	Human
Host:	Mouse
Clonality:	Polyclonal
Conjugate:	This CXorf21 antibody is un-conjugated
Application:	Western Blotting (WB), Immunofluorescence (IF)

Product Details

Purpose:	Mouse polyclonal antibody raised against a full-length human CXorf21 protein.
Immunogen:	CXorf21 (NP_079435.1, 1 a.a. ~ 301 a.a) full-length human protein.
Sequence:	MLSEGYLSGL EYWNDIHWSC ASYNEQVAGE KEEETNSVAT LSYSSVDETQ VRSLYVSCKS SGKFISSVHS RESQHRSRQR VTVLQTNPNP VFESPNLAAV EICRDASRET YLVPSSCKSI CKNYNDLQIA GGQVMAINS V TDFPSESSF EYGPLLKSSE IPLPMEDSIS TQPSPDFPQKP IQRYSYWR I TSIKEKSSLQ MQNPISNAVL NEYLEQKVVE LYKQYIMDTV FHDSSPTQIL ASELIMTSVD QISLQVSREK NLETSKARDI VFSRLLQLMS TEITEISTPS LHSQYSNVN P
Cross-Reactivity:	Human
Characteristics:	Antibody reactive against mammalian transfected lysate.

## Target Details

Target:	CXorf21
Alternative Name:	CXorf21 ( <a href="#">CXorf21 Products</a> )
Background:	Full Gene Name: chromosome X open reading frame 21 Synonyms: FLJ11577
Gene ID:	80231
NCBI Accession:	<a href="#">NM_025159</a>

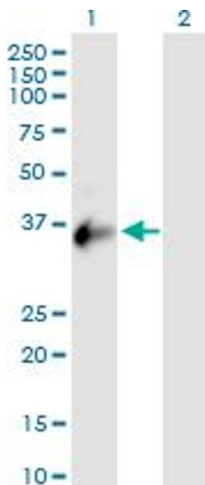
## Application Details

Application Notes:	Optimal working dilution should be determined by the investigator.
Restrictions:	For Research Use only

## Handling

Buffer:	In 1x PBS, pH 7.4
Handling Advice:	Aliquot to avoid repeated freezing and thawing.
Storage:	-20 °C
Storage Comment:	Store at -20°C or lower. Aliquot to avoid repeated freezing and thawing.

## Images

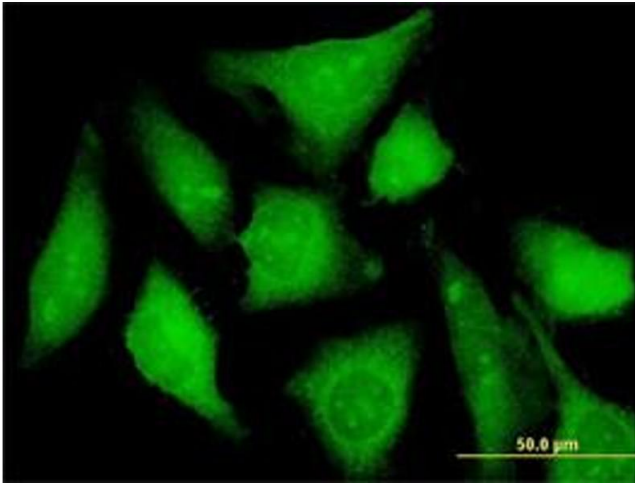


### Western Blotting

**Image 1.** Western Blot analysis of CXorf21 expression in transfected 293T cell line by CXorf21 MaxPab polyclonal antibody.

Lane 1: CXorf21 transfected lysate(33.11 KDa).

Lane 2: Non-transfected lysate.



### Immunofluorescence

**Image 2.** Immunofluorescence of purified MaxPab antibody to CXorf21 on HeLa cell. (antibody concentration 10  $\mu$ g/mL)