



Datasheet for ABIN529241
anti-C16orf70 antibody (AA 1-422)



[Go to Product page](#)

1 Image

Overview

Quantity:	50 µg
Target:	C16orf70
Binding Specificity:	AA 1-422
Reactivity:	Human
Host:	Mouse
Clonality:	Polyclonal
Conjugate:	This C16orf70 antibody is un-conjugated
Application:	Western Blotting (WB)

Product Details

Purpose:	Mouse polyclonal antibody raised against a full-length human LIN10 protein.
Immunogen:	LIN10 (NP_079463, 1 a.a. ~ 422 a.a) full-length human protein.
Sequence:	MLDLEVPPER SLGNEQWEFT LGMPLAQAVA ILQKHCRIIK NVQVLYSEQS PLSHDLILNL TQDGIKLMFD AFNQRCLKVIE VCDLTKVKLK YCGVHFNSQA IAPTIEQIDQ SFGATHPGVY NSAEQLFHLN FRGLSFSFQL DSWTEAPKYE PNFAHGLASL QIPHGATVKR MYIYSGNSLQ DTKAPMMPLS CFLGNVYAES VDVLRDGTGP AGLRLRLAA GCGPGLLADA KMRVFERSVY FGDSCQDVLS MLGSPHKVfy KSEDKMKIHS PSPHKQVPSK CNDYFFNYFT LGVDILFDAN THKVKKFLVH TNYPGHYNFN IYHRCEFKIP LAIKKENADG QTETCTTYSK WDNIQELLGH PVEKPVVLHR SSSPNNTNPF GSTFCFGLQR MIFEVMQNNH IASVTLYGPP RPGSHLR TAE LP
Cross-Reactivity:	Human
Characteristics:	Antibody reactive against mammalian transfected lysate.

Target Details

Target:	C16orf70
Alternative Name:	C16orf70 (C16orf70 Products)
Background:	Full Gene Name: chromosome 16 open reading frame 70 Synonyms: C16orf6,FLJ12076,LIN10,lin-10
Gene ID:	80262
NCBI Accession:	NM_025187

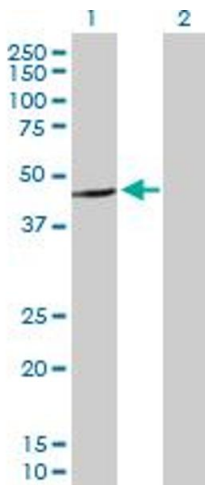
Application Details

Application Notes:	Optimal working dilution should be determined by the investigator.
Restrictions:	For Research Use only

Handling

Buffer:	In 1x PBS, pH 7.4
Handling Advice:	Aliquot to avoid repeated freezing and thawing.
Storage:	-20 °C
Storage Comment:	Store at -20°C or lower. Aliquot to avoid repeated freezing and thawing.

Images



Western Blotting

Image 1. Western Blot analysis of C16orf70 expression in transfected 293T cell line by C16orf70 MaxPab polyclonal antibody.

Lane 1: LIN10 transfected lysate(46.42 KDa).

Lane 2: Non-transfected lysate.