



Datasheet for ABIN529245
anti-ITPKC antibody (AA 1-683)



[Go to Product page](#)

1 Image

Overview

Quantity:	50 µg
Target:	ITPKC
Binding Specificity:	AA 1-683
Reactivity:	Human
Host:	Mouse
Clonality:	Polyclonal
Conjugate:	This ITPKC antibody is un-conjugated
Application:	Western Blotting (WB)

Product Details

Purpose:	Mouse polyclonal antibody raised against a full-length human ITPKC protein.
Immunogen:	ITPKC (NP_079470.1, 1 a.a. ~ 683 a.a) full-length human protein.
Sequence:	MRRRCPCRGSL NEAEAGALPA AARMGLEAPR GRRRRQPGQQ RPPGAGAPA GRPEGGGPWA RTEGSSLHSE PERAGLG PAP GTESPQAEFW TDGQTEPAAA GLGVETERPK QKTEPDRSSL RTHLEWSWSE LETTCLWTET GTDGLWTDPH RSDLQFQPEE ASPWTQPGVH GPWTELETHG SQTQPERVKS WADNLWTHQN SSSLQTHPEG ACPSKEPSAD GSWKELYTDG SRTQQDIEGP WTEPYTDGSQ KKQDTEAARK QPGTGGFQIQ QDTDGSWTQP STDGSQTAPG TDCLLGEPED GPLEEPEPGE LLTHLYSHLK CSPLCPVRL IIPETPEPE AQPVGPPSRV EGGSGGFSSA SSFDESEDDV VAGGGGASDP EDRSGSKPWK KLKTVLKYSY FVVSFRKHYP WVQLSGHAGN FQAGEDGRIL KRFCQCEQRS LEQLMKDPLR PFVPAYYGMV LQDGQTFNQM EDLLADFEGP SIMDCKMGSR TYLEEELVKA RERPRPRKDM YEKMVAVDPG APTPEEHAQG AVTKPRYMQW RETMSSSTSTL GFRIEGIKKA DGT CNTNFKK TQALEQVTKV LEDFVDGDHV ILQKYVACLE

Product Details

ELREALEISP FFKTHEVVGSLLLFVHDHTG LAKVWMIDFG KTVLPDHQT LSHRLPWAEG
NREDGYLWGL DNMICLLQGL AQS

Cross-Reactivity: Human

Characteristics: Antibody reactive against mammalian transfected lysate.

Target Details

Target: ITPKC

Alternative Name: ITPKC ([ITPKC Products](#))

Background: Full Gene Name: inositol 1,4,5-trisphosphate 3-kinase C
Synonyms: IP3KC

Gene ID: 80271

NCBI Accession: [NM_025194](#)

Application Details

Application Notes: Optimal working dilution should be determined by the investigator.

Restrictions: For Research Use only

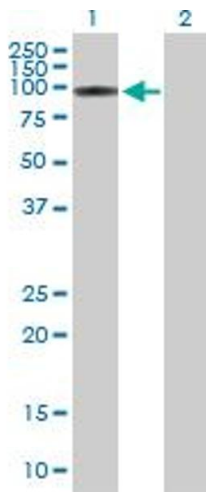
Handling

Buffer: In 1x PBS, pH 7.4

Handling Advice: Aliquot to avoid repeated freezing and thawing.

Storage: -20 °C

Storage Comment: Store at -20°C or lower. Aliquot to avoid repeated freezing and thawing.



Western Blotting

Image 1. Western Blot analysis of ITPKC expression in transfected 293T cell line by ITPKC MaxPab polyclonal antibody.

Lane1:ITPKC transfected lysate(75.13 KDa).

Lane2:Non-transfected lysate.