



[Go to Product page](#)

Datasheet for ABIN529266
anti-PPP1R2P9 antibody (AA 1-202)

1 Image

Overview

Quantity:	50 µg
Target:	PPP1R2P9
Binding Specificity:	AA 1-202
Reactivity:	Human
Host:	Mouse
Clonality:	Polyclonal
Conjugate:	This PPP1R2P9 antibody is un-conjugated
Application:	Western Blotting (WB)

Product Details

Purpose:	Mouse polyclonal antibody raised against a full-length human PPP1R2P9 protein.
Immunogen:	PPP1R2P9 (AAH56673.1, 1 a.a. ~ 202 a.a) full-length human protein.
Sequence:	MSASTSSHRP IKGILKNKSS SGSSVATSGQ QSGGTIQDVK RKKSQKWDES SILAAHRATY RDYDLMKANE PGTSYMSVQD NGEDSVRDVE GEDSVRGVEG KEATDASDHS CEVDEQESSE AYMRKILLHK QEKKRQFEMR RRLHYNEELN IKLARQLMWK ELQSEDNENE ETPQGTNEEK TAAEESSEAP LTGGLQTQSC DP
Cross-Reactivity:	Human
Characteristics:	Antibody reactive against mammalian transfected lysate.

Target Details

Target:	PPP1R2P9
---------	----------

Target Details

Alternative Name:	PPP1R2P9 (PPP1R2P9 Products)
Background:	Full Gene Name: protein phosphatase 1, regulatory (inhibitor) subunit 2 pseudogene 9 Synonyms: I-4
Gene ID:	80316

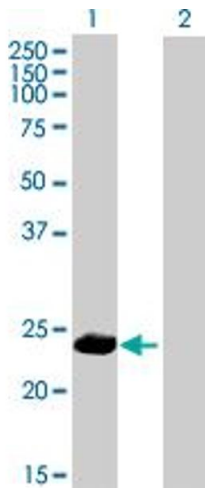
Application Details

Application Notes:	Optimal working dilution should be determined by the investigator.
Restrictions:	For Research Use only

Handling

Buffer:	In 1x PBS, pH 7.4
Handling Advice:	Aliquot to avoid repeated freezing and thawing.
Storage:	-20 °C
Storage Comment:	Store at -20°C or lower. Aliquot to avoid repeated freezing and thawing.

Images



Western Blotting

Image 1. Western Blot analysis of PPP1R2P9 expression in transfected 293T cell line by PPP1R2P9 MaxPab polyclonal antibody.

Lane 1: PPP1R2P9 transfected lysate(22.22 KDa).

Lane 2: Non-transfected lysate.