



[Go to Product page](#)

Datasheet for ABIN529282

anti-PNPLA3 antibody (AA 1-481)

1 Image

Overview

| | |
|----------------------|---------------------------------------|
| Quantity: | 50 µg |
| Target: | PNPLA3 |
| Binding Specificity: | AA 1-481 |
| Reactivity: | Human |
| Host: | Mouse |
| Clonality: | Polyclonal |
| Conjugate: | This PNPLA3 antibody is un-conjugated |
| Application: | Western Blotting (WB) |

Product Details

| | |
|-------------------|--|
| Purpose: | Mouse polyclonal antibody raised against a full-length human PNPLA3 protein. |
| Immunogen: | PNPLA3 (AAH65195.1, 1 a.a. ~ 481 a.a) full-length human protein. |
| Sequence: | MYDAERGWSL SFAGCGFLGF YHVGATRCLS EHAPHLLRDA RMLFGASAGA LHCVGVLSGI PLEQTLQVLS DLVRKARSRN IGIFHPSFNL SKFLRQGLGK CLPANVHQLI SGKIGISLTR VSDGENVLVS DFRSKDEVVD ALVCSCFMPF YSGLIPPSFR GVRVVDGGVS DNVPFIDAKT TITVSPFYGE YDICPKVKST NFLHVDITKL SLRLCTGNLY LLSRAFVPPD LKVLGEICLR GYLDAFRFLE EKGICNRPQP GLKSSSEGMD PEVAMPSWAN MSLDSSPESA ALAVRLEGDE LLDHLRLSIL PWDESILDTL SPRLATALSE EMKDKGGYMS KICNLLPIRI MSYVMLPCTL PVESAIAIVQ RLVTWLPDMP DDVLWLQWVT SQVFTRVLMC LLPASRSQMP VSSQQASPCT PEQDWPCWTP CSPEGCPAET KAEATPRSIL RSSLNFFLGN KVPAGAEGLS TFPSFSLEKS L |
| Cross-Reactivity: | Human |

Product Details

Characteristics: Antibody reactive against mammalian transfected lysate.

Target Details

Target: PNPLA3

Alternative Name: PNPLA3 ([PNPLA3 Products](#))

Background: Full Gene Name: patatin-like phospholipase domain containing 3
Synonyms: ADPN,C22orf20,iPLA(2)epsilon

Gene ID: 80339

Application Details

Application Notes: Optimal working dilution should be determined by the investigator.

Restrictions: For Research Use only

Handling

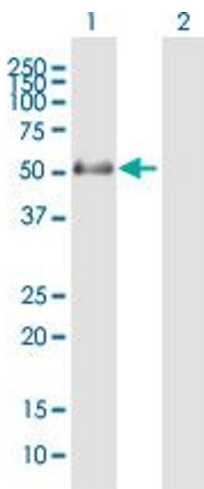
Buffer: In 1x PBS, pH 7.4

Handling Advice: Aliquot to avoid repeated freezing and thawing.

Storage: -20 °C

Storage Comment: Store at -20°C or lower. Aliquot to avoid repeated freezing and thawing.

Images



Western Blotting

Image 1. Western Blot analysis of PNPLA3 expression in transfected 293T cell line by PNPLA3 MaxPab polyclonal antibody.

Lane1:ADPN transfected lysate(52.91 KDa).

Lane2:Non-transfected lysate.