

Datasheet for ABIN529311
anti-EEPD1 antibody (AA 1-569)



[Go to Product page](#)

3 Images

Overview

Quantity:	50 µg
Target:	EEPD1
Binding Specificity:	AA 1-569
Reactivity:	Human
Host:	Mouse
Clonality:	Polyclonal
Conjugate:	This EEPD1 antibody is un-conjugated
Application:	Western Blotting (WB)

Product Details

Purpose:	Mouse polyclonal antibody raised against a full-length human KIAA1706 protein.
Immunogen:	KIAA1706 (AAH65518.1, 1 a.a. ~ 569 a.a) full-length human protein.
Sequence:	MGSTLGCHRS IPRDPSDL SH SRKFSAACNF SNILVNQERL NINTATEEEL MTLPGVTRAV ARSIVEYREY IGGFKKVEDL ALVSGVGATK LEQVKFEICV SSKGSSAQHS PSSLRDLLA EQQPHHLATA VPLTPRVNIN TATPAQLMSV RGLSEKMALS IVDFRREHGP FRSVEDLVRM DGINAAFLDR IRHQVFAERS RPPSTHTNGG LTFTAKPHPS PTSLSLQSED LDLPPGGPTQ IISTRPSVEA FGGTRDGRP V LRLATWNLQG CSVEKANNPG VREVVCMTLL ENSIKLLAVQ ELLDREALEK FCTELNQPTL PNIRKWKGPR GCWKAVVAEK PSNQLQKGAG YAGFLWDAAA GMELRDAGSQ ESSPSNGHGK LAGPSPYLGR FKVGSHTLTL VNLHLAALTL LGSENPSKNH SDGHRLASFA QTLQETLKGE KDVIILGDFG QGPDSNDYDI LRKEKFHHLI PAHTFTNIST KNPQGSKSLD NIWISKSLKK VFTGHWAVVR EGLTNPWIPD NWSWGGVASE HCPVLAEFYT EKDWSKKDAP RNGSGVALER SEANIKHER

Product Details

Cross-Reactivity:	Human, Rat
Characteristics:	Antibody reactive against mammalian transfected lysate.

Target Details

Target:	EEPD1
Alternative Name:	EEPD1 (EEPD1 Products)
Background:	Full Gene Name: endonuclease/exonuclease/phosphatase family domain containing 1 Synonyms: HSPC107,KIAA1706
Gene ID:	80820

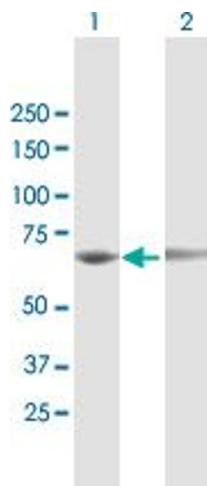
Application Details

Application Notes:	Optimal working dilution should be determined by the investigator.
Restrictions:	For Research Use only

Handling

Buffer:	In 1x PBS, pH 7.4
Handling Advice:	Aliquot to avoid repeated freezing and thawing.
Storage:	-20 °C
Storage Comment:	Store at -20°C or lower. Aliquot to avoid repeated freezing and thawing.

Images

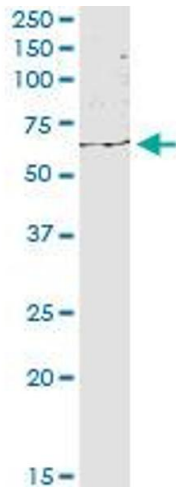


Western Blotting

Image 1. Western Blot analysis of EEPD1 expression in transfected 293T cell line by EEPD1 MaxPab polyclonal antibody.

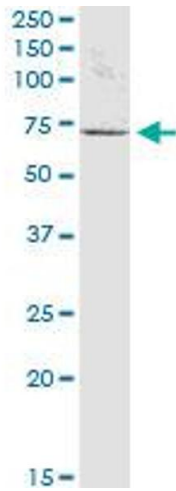
Lane 1: KIAA1706 transfected lysate(62.59 KDa).

Lane 2: Non-transfected lysate.



Western Blotting

Image 2. EEPD1 MaxPab polyclonal antibody. Western Blot analysis of EEPD1 expression in HeLa.



Western Blotting

Image 3. EEPD1 MaxPab polyclonal antibody. Western Blot analysis of EEPD1 expression in PC-12.