



[Go to Product page](#)

Datasheet for ABIN529315  
**anti-APOL6 antibody (AA 1-76)**

2 Images

Overview

Quantity:	100 µg
Target:	APOL6
Binding Specificity:	AA 1-76
Reactivity:	Human
Host:	Mouse
Clonality:	Monoclonal
Conjugate:	This APOL6 antibody is un-conjugated
Application:	ELISA, Western Blotting (WB)

Product Details

Purpose:	Mouse monoclonal antibody raised against a partial recombinant APOL6.
Immunogen:	APOL6 (NP_085144.1, 1 a.a. ~ 76 a.a) partial recombinant protein with GST tag. MW of the GST tag alone is 26 KDa.
Sequence:	MDNQAERESE AGVGLQRDED DAPLCEDVEL QDGDLSPEEK IFLREFPRLK EDLKGNIDKL RALADDIDKT HKKFTK
Clone:	1F7
Isotype:	IgG2a
Cross-Reactivity:	Human
Characteristics:	Antibody Reactive Against Recombinant Protein.

## Target Details

Target:	APOL6
Alternative Name:	APOL6 ( <a href="#">APOL6 Products</a> )
Background:	Full Gene Name: apolipoprotein L, 6 Synonyms: APOL-VI,APOLVI,DKFZp667M075,FLJ38562,FLJ90164,MGC57495
Gene ID:	80830
NCBI Accession:	<a href="#">NM_030641</a>

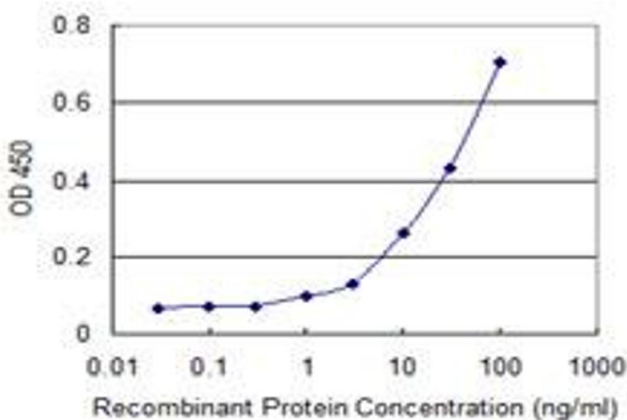
## Application Details

Application Notes:	Optimal working dilution should be determined by the investigator.
Restrictions:	For Research Use only

## Handling

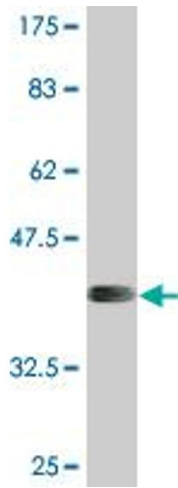
Buffer:	In 1x PBS, pH 7.4
Handling Advice:	Aliquot to avoid repeated freezing and thawing.
Storage:	-20 °C
Storage Comment:	Store at -20°C or lower. Aliquot to avoid repeated freezing and thawing.

## Images



### ELISA

**Image 1.** Detection limit for recombinant GST tagged APOL6 is 0.3 ng/ml as a capture antibody.



### Western Blotting

**Image 2.** Western Blot detection against Immunogen (34.1 kDa).