



[Go to Product page](#)

Datasheet for ABIN529319
anti-APOL3 antibody (AA 240-336)

2 Images

Overview

| | |
|----------------------|--------------------------------------|
| Quantity: | 200 µL |
| Target: | APOL3 |
| Binding Specificity: | AA 240-336 |
| Reactivity: | Human |
| Host: | Mouse |
| Clonality: | Monoclonal |
| Conjugate: | This APOL3 antibody is un-conjugated |
| Application: | Western Blotting (WB), ELISA |

Product Details

| | |
|-------------------|--|
| Purpose: | Mouse monoclonal antibody raised against a partial recombinant APOL3. |
| Immunogen: | APOL3 (NP_663615, 240 a.a. ~ 336 a.a) partial recombinant protein with GST tag. MW of the GST tag alone is 26 KDa. |
| Sequence: | VEHSYTSSAE AEASRLTATS IDRLKVFKEV MRDITPNLLS LLNNYYEATQ TIGSEIRAIR QARARARLPV TTWRISAGSG GQAERTIAGT TRAVSRG |
| Clone: | 4E5 |
| Isotype: | IgG2a kappa |
| Cross-Reactivity: | Human |

Target Details

| | |
|-------------------|---|
| Target: | APOL3 |
| Alternative Name: | APOL3 (APOL3 Products) |
| Background: | Full Gene Name: apolipoprotein L, 3 Synonyms: APOLIII,CG12-1 |
| Gene ID: | 80833 |
| NCBI Accession: | NP_663615 , NM_145640 |

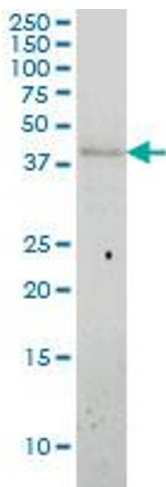
Application Details

| | |
|--------------------|---|
| Application Notes: | Optimal working dilution should be determined by the investigator. |
| Comment: | Product Quality tested by: Antibody Reactive Against Recombinant Protein. |
| Restrictions: | For Research Use only |

Handling

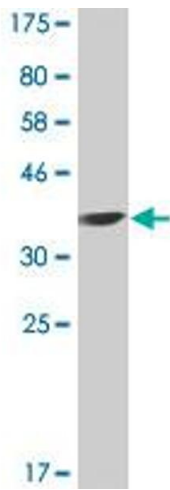
| | |
|------------------|--|
| Format: | Liquid |
| Buffer: | In ascites fluid |
| Handling Advice: | Aliquot to avoid repeated freezing and thawing. |
| Storage: | -20 °C |
| Storage Comment: | Store at -20°C or lower. Aliquot to avoid repeated freezing and thawing. |

Images



Western Blotting

Image 1. APOL3 monoclonal antibody (M01A), clone 4E5
Western Blot analysis of APOL3 expression in Jurkat .



Western Blotting

Image 2. Western Blot detection against Immunogen (36.41 kDa).