



[Go to Product page](#)

Datasheet for ABIN529321

anti-EGFL8 antibody (AA 1-293)

1 Image

Overview

Quantity:	50 µL
Target:	EGFL8
Binding Specificity:	AA 1-293
Reactivity:	Human
Host:	Mouse
Clonality:	Polyclonal
Conjugate:	This EGFL8 antibody is un-conjugated
Application:	Western Blotting (WB)

Product Details

Purpose:	Mouse polyclonal antibody raised against a full-length human EGFL8 protein.
Immunogen:	EGFL8 (NP_085155, 1 a.a. ~ 293 a.a) full-length human protein.
Sequence:	MGSRAELCTL LGGFSFLLLL IPGEGAKGGS LRESQGVCSK QTLVWPLHYN ESYSQPVYKP YLTLCAGRRI CSTYRTMYRV MWREVRREVQ QTHAVCCQGW KKRHPGALTC EAICAKPCLN GGVCVRPDQC ECAPGWGGKH CHVDVDECRT SITLCSHHCF NTAGSFTCGC PHDLVLGVDG RTCMEGSPEP PTSASILSVA VREAEDERA LKQEIHELRL RLERLEQWAG QAGAWVRAVL PVPPEELQPE QVAELWGRGD RIESLSDQVL LLEERLGACS CEDNSLGLGV NHR
Cross-Reactivity:	Human
Characteristics:	Antibody reactive against mammalian transfected lysate.

Target Details

Target:	EGFL8
Alternative Name:	EGFL8 (EGFL8 Products)
Background:	Full Gene Name: EGF-like-domain, multiple 8 Synonyms: C6orf8,FLJ44493,MGC44938,MGC59719,NG3
Gene ID:	80864
NCBI Accession:	NM_030652

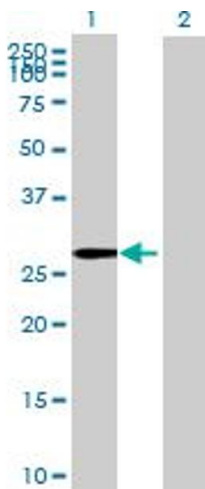
Application Details

Application Notes:	Optimal working dilution should be determined by the investigator.
Restrictions:	For Research Use only

Handling

Format:	Liquid
Buffer:	No additive
Preservative:	Without preservative
Handling Advice:	Aliquot to avoid repeated freezing and thawing.
Storage:	-20 °C
Storage Comment:	Store at -20°C or lower. Aliquot to avoid repeated freezing and thawing.

Images



Western Blotting

Image 1. Western Blot analysis of EGFL8 expression in transfected 293T cell line by EGFL8 MaxPab polyclonal antibody.

Lane 1: EGFL8 transfected lysate(32.23 kDa).

Lane 2: Non-transfected lysate.