



[Go to Product page](#)

Datasheet for ABIN529329
anti-WNT5B antibody (AA 1-359)

2 Images

Overview

Quantity:	50 µg
Target:	WNT5B
Binding Specificity:	AA 1-359
Reactivity:	Human
Host:	Mouse
Clonality:	Polyclonal
Conjugate:	This WNT5B antibody is un-conjugated
Application:	Western Blotting (WB)

Product Details

Purpose:	Mouse polyclonal antibody raised against a full-length human WNT5B protein.
Immunogen:	WNT5B (NP_110402.2, 1 a.a. ~ 359 a.a) full-length human protein.
Sequence:	MPSLLLLLFTA ALLSSWAQLL TDANSWWSLA LNPVQRPEMF IIGAQPVCSSQ LPGLSPGQRK LCQLYQEHMA YIGEGAKTGI KECQHQRFRQR RWNCSTADNA SVFGRVMQIG SRETAFTHAV SAAGVVNAIS RACREGELST CGCSRTARPK DLPRDWLWGG CGDNVEYGYR FAKEFVDARE REKNFAKGSE EQGRVLMNLQ NNEAGRRAVY KMADVACKCH GVSGSCSLKT CWLQLAEFRK VGDRLEKEYD SAAAMRVTRK GRLELVNSRF TQPTPEDLVY VDPSPDYCLR NESTGSLGTQ GRLCNKTSEG MDGCELMCCG RGYNQFKSVQ VERCHCKFHW CCFVRCKKCT EIVDQYICK
Cross-Reactivity:	Human
Characteristics:	Antibody reactive against mammalian transfected lysate.

Target Details

Target:	WNT5B
Alternative Name:	WNT5B (WNT5B Products)
Background:	Full Gene Name: wingless-type MMTV integration site family, member 5B Synonyms: MGC2648
Gene ID:	81029
NCBI Accession:	NM_030775
Pathways:	WNT Signaling , Embryonic Body Morphogenesis , Positive Regulation of fat Cell Differentiation

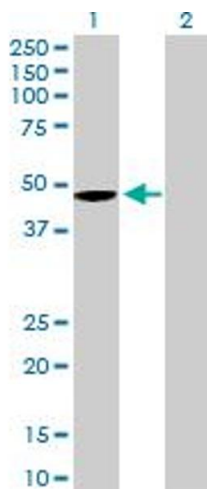
Application Details

Application Notes:	Optimal working dilution should be determined by the investigator.
Restrictions:	For Research Use only

Handling

Buffer:	In 1x PBS, pH 7.4
Handling Advice:	Aliquot to avoid repeated freezing and thawing.
Storage:	-20 °C
Storage Comment:	Store at -20°C or lower. Aliquot to avoid repeated freezing and thawing.

Images

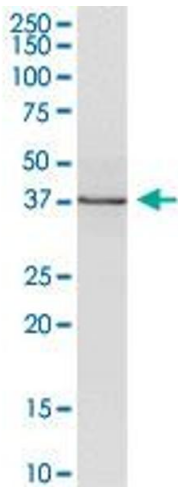


Western Blotting

Image 1. Western Blot analysis of WNT5B expression in transfected 293T cell line by WNT5B MaxPab polyclonal antibody.

Lane 1: WNT5B transfected lysate(39.49 KDa).

Lane 2: Non-transfected lysate.



Western Blotting

Image 2. WNT5B MaxPab polyclonal antibody. Western Blot analysis of WNT5B expression in human kidney.