

Datasheet for ABIN529334  
**anti-SLC2A10 antibody (AA 325-382)**



[Go to Product page](#)

3 Images

### Overview

Quantity:	100 µg
Target:	SLC2A10
Binding Specificity:	AA 325-382
Reactivity:	Human
Host:	Mouse
Clonality:	Monoclonal
Conjugate:	This SLC2A10 antibody is un-conjugated
Application:	Western Blotting (WB), ELISA

### Product Details

Purpose:	Mouse monoclonal antibody raised against a partial recombinant SLC2A10.
Immunogen:	SLC2A10 (NP_110404, 325 a.a. ~ 382 a.a) partial recombinant protein with GST tag. MW of the GST tag alone is 26 KDa.
Sequence:	SGPSCLAVPN ATGQTGLPGD SGLLQDSSLP PIPRTNEDQR EPILSTAKKT KPHPRSGD
Clone:	1E12
Isotype:	IgG1
Cross-Reactivity:	Human
Characteristics:	Antibody Reactive Against Recombinant Protein.

## Target Details

Target:	SLC2A10
Alternative Name:	SLC2A10 ( <a href="#">SLC2A10 Products</a> )
Background:	Full Gene Name: solute carrier family 2 (facilitated glucose transporter), member 10 Synonyms: ATS, GLUT10, MGC126706
Gene ID:	81031
NCBI Accession:	<a href="#">NM_030777</a>

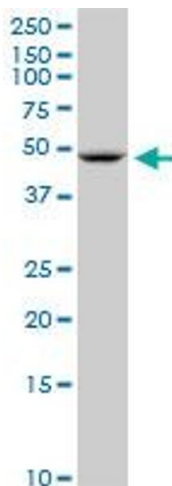
## Application Details

Application Notes:	Optimal working dilution should be determined by the investigator.
Restrictions:	For Research Use only

## Handling

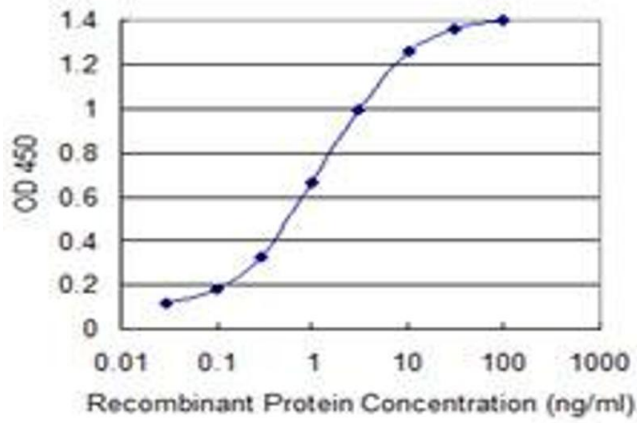
Buffer:	In 1x PBS, pH 7.4
Handling Advice:	Aliquot to avoid repeated freezing and thawing.
Storage:	-20 °C
Storage Comment:	Store at -20°C or lower. Aliquot to avoid repeated freezing and thawing.

## Images



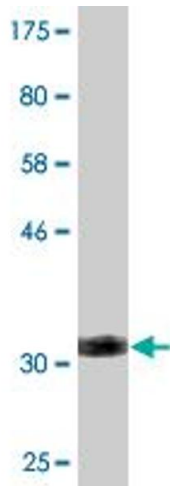
### Western Blotting

**Image 1.** SLC2A10 monoclonal antibody (M02), clone 1E12.  
Western Blot analysis of SLC2A10 expression in HepG2.



### ELISA

**Image 2.** Detection limit for recombinant GST tagged SLC2A10 is 0.03 ng/ml as a capture antibody.



### Western Blotting

**Image 3.** Western Blot detection against Immunogen (32.12 kDa).