



[Go to Product page](#)

Datasheet for ABIN529349  
**anti-WBSCR16 antibody (AA 1-464)**

1 Image

Overview

Quantity:	50 µg
Target:	WBSCR16
Binding Specificity:	AA 1-464
Reactivity:	Human
Host:	Mouse
Clonality:	Polyclonal
Conjugate:	This WBSCR16 antibody is un-conjugated
Application:	Western Blotting (WB)

Product Details

Purpose:	Mouse polyclonal antibody raised against a full-length human WBSCR16 protein.
Immunogen:	WBSCR16 (AAH07823.1, 1 a.a. ~ 464 a.a) full-length human protein.
Sequence:	MALVALVAGA RLGRRLSGPG LGRGHWTAAG RSRSRREAAE AEAEPVVQY VGERAARADR VFVWGFSGFSG ALGVPSFVVP SSGPGPRAGA RPRRRIQPVP YRLELDQKIS SAACGYGFTL LSSKTADVTK VWGMGLNKDS QLGFHRSRKD KTRGYEYVLE PSPVSLPLDR PQETRVLQVS CGRAHSLVLT DREGVFSMGN NSYQQCGRKV VENIYSESH RVHRMQDFDG QVVQVACGQD HSLFLTDKGE VYSCGWGADG QTGLGHYNIT SSPTKLGGDL AGVNVIQVAT YGDCCLAVSA DGGLFGWGNS EYLQLASVTD STQVNVPRCL HFSGVGKVRQ AACGGTGCAV LNNEGHHVFWW GYGILGKGPV LVESAVPEMI PPTLFGLTEF NPEIQVSRIR CGLSHFAALT NKGELFVWVK NIRGCLGIGR LEDQYFPWRV TMPGEPVDVA CGVDHMTLA KSFI
Cross-Reactivity:	Human

## Product Details

Characteristics: Antibody reactive against mammalian transfected lysate.

## Target Details

Target: WBSCR16

Alternative Name: WBSCR16 ([WBSCR16 Products](#))

Background: Full Gene Name: Williams-Beuren syndrome chromosome region 16  
Synonyms: DKFZp434D0421,MGC189739,MGC44931

Gene ID: 81554

## Application Details

Application Notes: Optimal working dilution should be determined by the investigator.

Restrictions: For Research Use only

## Handling

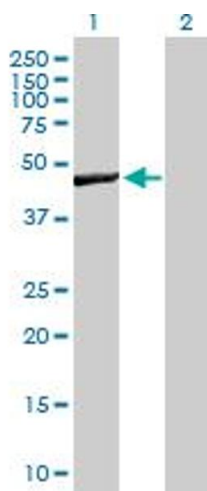
Buffer: In 1x PBS, pH 7.4

Handling Advice: Aliquot to avoid repeated freezing and thawing.

Storage: -20 °C

Storage Comment: Store at -20°C or lower. Aliquot to avoid repeated freezing and thawing.

## Images



### Western Blotting

**Image 1.** Western Blot analysis of WBSCR16 expression in transfected 293T cell line by WBSCR16 MaxPab polyclonal antibody.

Lane 1: WBSCR16 transfected lysate(51.04 KDa).

Lane 2: Non-transfected lysate.